

AUSTRALIAN AMALGAMATED TERMINALS PTY LTD (AAT)

BI-ANNUAL COMPLIANCE REPORT

DATE OF REPORT: 30th August, 2024

Port Kembla (NSW) & Fisherman Islands (QLD)

REPORT PERIOD: 1st January 2024 TO 30th June 2024

KPI	Port Kembla			Brisbane		
		Average time	Explanation		Average time	Explanation
<b>KPI 1 Truck Turnaround Time</b>  Average time spent at the terminal picking up or delivering cargo, measured from gate entry through to departure from terminal	<b>Quarter 1</b>			<b>Quarter 1</b>		
	Automobiles - Qube	43 mins		Automobiles - Qube	29 mins	
	Automobiles - Linx	42 mins		Automobiles - Linx	27 mins	
	Breakbulk - Qube	1 hr 10 mins		Automobiles - TML	0 mins	N/A
	Breakbulk - Linx	1 hr 0 mins		Breakbulk - Qube	1 hr 5 mins	
				Breakbulk - Linx	1 hr 1 mins	
				Breakbulk - TML	1 hr 3 mins	
	<b>Quarter 2</b>			<b>Quarter 2</b>		
	Automobiles - Qube	40 mins		Automobiles - Qube	31 mins	
	Automobiles - Linx	43 mins		Automobiles - Linx	27 mins	
	Breakbulk - Qube	1 hr 50 mins		Automobiles - TML	0 mins	N/A
	Breakbulk - Linx	1 hr 56 mins		Breakbulk - Qube	1 hr 3 mins	
				Breakbulk - Linx	49 mins	
				Breakbulk - TML	55 mins	
<b>KPI 2 Yard Dwell Time - Imports</b>	<b>Quarter 1</b>			<b>Quarter 1</b>		
	Automobiles - Qube	90 hrs 04 mins		Automobiles - Qube	110 hrs 38 mins	Qube handled significantly more vehicles in this period that went into storage.
	Automobiles - Linx	134 hrs 39 mins		Automobiles - Linx	69 hrs 17 mins	
	Breakbulk - Qube	141 hrs 19 mins		Automobiles - TML	0 mins	N/A
	Breakbulk - Linx	109 hrs 18 mins		Breakbulk - Qube	56 hrs 49 mins	
				Breakbulk - Linx	48 hrs 32 mins	
				Breakbulk - TML	113 hrs 52 mins	
	<b>Quarter 2</b>			<b>Quarter 2</b>		
	Automobiles - Qube	105 hrs 37 mins		Automobiles - Qube	98 hrs 52 mins	
	Automobiles - Linx	102 hrs 20 mins		Automobiles - Linx	75 hrs 59 mins	
	Breakbulk - Qube	107 hrs 12 mins		Automobiles - TML	0 mins	N/A
	Breakbulk - Linx	46 hrs 17 mins		Breakbulk - Qube	57 hrs 20 mins	
				Breakbulk - Linx	52 hrs 51 mins	
				Breakbulk - TML	82 hrs 09 mins	
<b>KPI 3 Yard Dwell Time - Exports</b>  Average time export cargo units stayed at the designated cargo pick-up area of the terminal waiting to be loaded onto a vessel, once the cargo is ready to be loaded.	<b>Quarter 1</b>			<b>Quarter 1</b>		
	Automobiles - Qube	228 hrs 57 mins	Large number of transhipments and coastal vehicles received with vehicles received up to 4 days prior to departure and vessel delays further impacting dwell time.	Automobiles - Qube	196 hrs 25 mins	
	Automobiles - Linx	86 hrs 57 mins		Automobiles - Linx	249 hrs 24 mins	
	Breakbulk - Qube	322 hrs 25 mins		Automobiles - TML	190 hrs 28 mins	
	Breakbulk - Linx	485 hrs 19 mins		Breakbulk - Qube	175 hrs 11 mins	
				Breakbulk - Linx	248 hrs 15 mins	
				Breakbulk - TML	208 hrs 58 mins	
	<b>Quarter 2</b>			<b>Quarter 2</b>		
	Automobiles - Qube	232 hrs 17 mins		Automobiles - Qube	174 hrs 58 mins	
	Automobiles - Linx	175 hrs 58 mins		Automobiles - Linx	158 hrs 48 mins	
	Breakbulk - Qube	366 hrs 56 mins		Automobiles - TML	334 hrs 53 mins	Higher dwell time related to 14 transhipped used vehicles that we unloaded from TF7 on 05/06/24 and reloaded on Norfolk vessel on 22/06/24.
Breakbulk - Linx	726 hrs 54 mins	Linx handle USA bound export cargo for Bluescope as NSW Ports is rebuilding 2 Bluescope wharves. AAT has arranged directly with Bluescope to accept early receivals to assist with this export bound cargo which is reflected in the high Export Dwell time.	Breakbulk - Qube	202 hrs 31 mins		
			Breakbulk - Linx	150 hrs 32 mins		
			Breakbulk - TML	132 hrs 13 mins		
<b>KPI 4 Berthing Allocation Changes</b>  Number of incidents where there was a delay in start of stevedoring operations due to deviation between planned allocation of berth and actual allocation, where AAT was responsible for such deviation.	<b>Quarter 1</b>	Number of Incidents	Explanation	<b>Quarter 1</b>	Number of Incidents	Explanation
	Qube	Zero		Qube	Zero	
	Linx	Zero		Linx	Zero	
				TML	Zero	
	<b>Quarter 2</b>			<b>Quarter 2</b>		
	Qube	Zero		Qube	Zero	
	Linx	Zero		Linx	Zero	
				TML	Zero	
<b>KPI 5 Mooring Services</b>  Number of incidents where there was a delay in the mooring of vessels due to a deviation between planned berth allocation and actual allocation, where AAT was responsible for such deviation.	<b>Quarter 1</b>	Number of Incidents	Explanation	<b>Quarter 1</b>	Number of Incidents	Explanation
	Qube	Zero		Qube	Zero	
	Linx	Zero		Linx	Zero	
				TML	Zero	
	<b>Quarter 2</b>			<b>Quarter 2</b>		
	Qube	Zero		Qube	Zero	
	Linx	Zero		Linx	Zero	
				TML	Zero	
		Explanation			Explanation	

<b>KPI 6 Allocation of first point of rest area</b>  Data showing, for each cargo shipment:  a) berth allocated to vessel b) allocated storage area in the Terminal Layout Plan for the cargo's first  This data can be set out in an Attachment to this Compliance Report						
		Refer Attachment A			Refer Attachment A	
<b>KPI 7 Equipment Availability</b>  Number of deviations between AAT equipment requested by stevedore or by shipping line and actual machinery provided (including standard of equipment, age, type and capacity)		Number of Incidents	Explanation		Number of Incidents	Explanation
	<b>Quarter 1</b>			<b>Quarter 1</b>		
		Qube	Zero		Qube	Zero
		Linx	Zero		Linx	Zero
					TML	Zero
	<b>Quarter 2</b>			<b>Quarter 2</b>		
	Qube	Zero		Qube	Zero	
	Linx	Zero		Linx	Zero	
				TML	Zero	
<b>KPI 8 Mechanical Support</b>  Average time lost in excess of one hour due to failure of AAT in providing mechanical breakdown support, reported from the time Mechanical Engineer officially notified to the time the issue was resolved.		Average time lost	Explanation		Average time lost	Explanation
	<b>Quarter 1</b>			<b>Quarter 1</b>		
		Qube	Zero		Qube	Zero
		Linx	Zero		Linx	Zero
					TML	Zero
	<b>Quarter 2</b>			<b>Quarter 2</b>		
	Qube	Zero		Qube	5 hrs	
	Linx	Zero		Linx	Zero	
				TML	Zero	
<b>KPI 9 Cargo dwell time over free time/long terms storage</b>  Time cargo units stay over free time, excluding Customs, DAFF and customer hold.		Units/percentage	Explanation		Units/percentage	Explanation
	<b>Quarter 1</b>			<b>Quarter 1</b>		
		Services to Qube			Services to Qube	
		Total Cargo Units	48,606		Total Cargo Units	62,806
		Units staying over free time	13,206		Units staying over free time	8,794
		Units over free time due Customs/Daff or customer	107		Units over free time due Customs/Daff or customer	72
		Units staying over free time excluding Customs etc. as percentage of total units	27%		Units staying over free time excluding Customs etc. as percentage of total units	14%
		Services to Linx			Services to Linx	
		Total Cargo Units	24,489		Total Cargo Units	27,250
		Units staying over free time	13,292		Units staying over free time	5,623
		Units over free time due Customs/Daff or customs	252		Units over free time due Customs/Daff or customer	220
		Units staying over free time excluding Customs etc. as percentage of total units	53%		Units staying over free time excluding Customs etc. as percentage of total units	20%
		<b>Quarter 2</b>			<b>Services to TML</b>	
		Services to Qube			Total Cargo Units	4,267
		Total Cargo Units	63,867		Units staying over free time	4
		Units staying over free time	16,855		Units over free time due Customs/Daff or customer	3
		Units over free time due Customs/Daff or customer	166		Units staying over free time excluding Customs etc. as percentage of total units	0%
		Units staying over free time excluding Customs etc. as percentage of total units	26%			
		Services to Linx			<b>Quarter 2</b>	
		Total Cargo Units	24,487		Services to Qube	
		Units staying over free time	8,774		Total Cargo Units	67,696
		Units over free time due Customs/Daff or customer	64		Units staying over free time	12,419
		Units staying over free time excluding Customs etc. as percentage of total units	36%		Units over free time due Customs/Daff or customer	33
					Units staying over free time excluding Customs etc. as percentage of total units	18%
					Services to Linx	
					Total Cargo Units	30,663
					Units staying over free time	6,784
					Units over free time due Customs/Daff or customer	24
					Units staying over free time excluding Customs etc. as percentage of total units	22%
				Services to TML		
				Total Cargo Units	5,066	
				Units staying over free time	317	
				Units over free time due Customs/Daff or customer	8	
				Units staying over free time excluding Customs etc. as percentage of total units	6%	
<b>KPI 10 Confidentiality and ring-fencing</b>		Number of Complaints	Explanation		Number of Complaints	Explanation
	<b>Quarter 1</b>			<b>Quarter 1</b>		
		Complaints for Non-Compliance with Clause 6			Complaints for Non-Compliance with Clause 6	

Number of complaints received by AAT concerning non-compliance with Clause 6 of the Undertaking	Services to Qube	Zero		Services to Qube	Zero	
	Services to Linx	Zero		Services to Linx	Zero	
	Breaches of Clause 6 Clause 6			Services to TML	Zero	
	Services to Qube	Zero		Breaches of Clause 6 Clause 6		
	Services to Linx	Zero		Services to Qube	Zero	
				Services to Linx	Zero	
				Services to TML	Zero	
Number of instance of breaches of Clause 6	Quarter 2			Quarter 2		
	Complaints for Non-Compliance with Clause 6			Complaints for Non-Compliance with Clause 6		
	Services to Qube	Zero		Services to Qube	Zero	
	Services to Linx	Zero		Services to Linx	Zero	
	Breaches of Clause 6 Clause 6			Services to TML	Zero	
	Services to Qube	Zero		Services to TML	Zero	
	Services to Linx	Zero		Breaches of Clause 6 Clause 6		
				Services to Qube	Zero	
				Services to Linx	Zero	
				Services to TML	Zero	
AAT's response to the complaints and/or breaches						
KPI 11 Complaints		Number of Complaints	Explanation		Number of Complaints	Explanation
	Quarter 1			Quarter 1		
	Complaints Under Price and non-Price Dispute Resolution Process			Complaints Under Price and non-Price Dispute Resolution Process		
	Services to Qube	Zero		Services to Qube	Zero	
	Services to Linx	Zero		Services to Linx	Zero	
	Details of complaint and outcome	Zero		Services to TML	Zero	
				Details of complaint and outcome	Zero	
	Quarter 2			Quarter 2		
	Complaints Under Price and non-Price Dispute Resolution Process			Complaints Under Price and non-Price Dispute Resolution Process		
	Services to Qube	Zero		Services to Qube	Zero	
	Services to Linx	Zero		Services to Linx	Zero	
	Details of complaint and outcome	Zero		Services to TML	Zero	
			Details of complaint and outcome	Zero		

**PART B: TERMINAL LAYOUT PLAN FOR EACH TERMINAL**

See attachment Part B

**PART C: TERMINAL USERS IN WHICH QUBE OR A QUBE RELATED ENTITY HAS AN INTEREST**

See attachment Part C

AUSTRALIAN AMALGAMATED TERMINALS PTY LTD (AAT)

MELBOURNE BI-ANNUAL COMPLIANCE REPORT

DATE OF REPORT: 30th August, 2024

REPORT PERIOD: 26th June 2024 TO 30th June 2024

KPI	Melbourne			
<p><b>KPI 1 Truck Turnaround Time</b></p> <p>Average time spent at the terminal picking up or delivering cargo, measured from gate entry through to departure from terminal</p>		Average time	Explanation	
	<b>Quarter 1</b>			
	Automobiles - Qube	<b>0 mins</b>	N/A	
	Automobiles - Linx	<b>0 mins</b>	N/A	
	Breakbulk - Qube	<b>0 mins</b>	Compliance report not applicable in this period	
	Breakbulk - Linx	<b>0 mins</b>	Compliance report not applicable in this period	
	<b>Quarter 2</b>			
	Automobiles - Qube	<b>0 mins</b>	N/A	
	Automobiles - Linx	<b>0 mins</b>	N/A	
	Breakbulk - Qube	<b>53 mins</b>		
	Breakbulk - Linx	<b>0 mins</b>	No cargo handled in reporting period	
	<p><b>KPI 2 Yard Dwell Time - Imports</b></p>		Average time	Explanation
<b>Quarter 1</b>				
Automobiles - Qube		<b>0 mins</b>	N/A	
Automobiles - Linx		<b>0 mins</b>	N/A	
Breakbulk - Qube		<b>0 mins</b>	Compliance report not applicable in this period	
Breakbulk - Linx		<b>0 mins</b>	Compliance report not applicable in this period	
<b>Quarter 2</b>				
Automobiles - Qube		<b>0 mins</b>	N/A	
Automobiles - Linx		<b>0 mins</b>	N/A	
Breakbulk - Qube		<b>0 mins</b>	Vessel cargo was first available after the reporting period	
Breakbulk - Linx		<b>0 mins</b>	No vessels handled in the reporting period	
<p><b>KPI 3 Yard Dwell Time - Exports</b></p>			Average time	Explanation
	<b>Quarter 1</b>			
	Automobiles - Qube	<b>0 mins</b>	N/A	
	Automobiles - Linx	<b>0 mins</b>	N/A	
	Breakbulk - Qube	<b>0 mins</b>	Compliance report not applicable in this period	

<p>Average time export cargo units stayed at the designated cargo pick-up area of the terminal waiting to be loaded onto a vessel, once the cargo is ready to be loaded.</p>	Breakbulk - Linx	0 mins	Compliance report not applicable in this period
	<b>Quarter 2</b>		
	Automobiles - Qube	0 mins	N/A
	Automobiles - Linx	0 mins	N/A
	Breakbulk - Qube	0 mins	No export cargo received during reporting period
	Breakbulk - Linx	0 mins	No vessels handled in the reporting period
<p><b>KPI 4 Berthing Allocation Changes</b></p> <p>Number of incidents where there was a delay in start of stevedoring operations due to deviation between planned allocation of berth and actual allocation, where AAT was responsible for such deviation.</p>		Number of Incidents	Explanation
	<b>Quarter 1</b>		
	Qube	N/A	Compliance report not applicable in this period
	Linx	N/A	Compliance report not applicable in this period
	<b>Quarter 2</b>		
	Qube	Zero	
	Linx	N/A	No vessels handled in the reporting period
<p><b>KPI 5 Mooring Services</b></p> <p>Number of incidents where there was a delay in the mooring of vessels due to a deviation between planned berth allocation and actual allocation, where AAT was responsible for such deviation.</p>		Number of Incidents	Explanation
	<b>Quarter 1</b>		
	Qube	N/A	Compliance report not applicable in this period
	Linx	N/A	Compliance report not applicable in this period
	<b>Quarter 2</b>		
	Qube	Zero	
	Linx	N/A	No vessels handled in the reporting period
<p><b>KPI 6 Allocation of first point of rest area</b></p> <p>Data showing, for each cargo shipment:</p> <p>a) berth allocated to vessel</p> <p>b) allocated storage area in the Terminal Layout Plan for the cargo's first point of</p> <p><b>This data can be set out in an Attachment to this Compliance Report</b></p>		Refer Attachment A	Explanation
<p><b>KPI 7 Equipment Availability</b></p>		Number of Incidents	Explanation
	<b>Quarter 1</b>		
	Qube	N/A	Compliance report not applicable in this period
	Linx	N/A	Compliance report not applicable in this period

Number of deviations between AAT equipment requested by stevedore or by shipping line and actual machinery provided (including standard of equipment, age, type and capacity)	<b>Quarter 2</b>		
	Qube	<b>Zero</b>	
	Linx	<b>N/A</b>	No vessels handled in the reporting period
<b>KPI 8 Mechanical Support</b>  Average time lost in excess of one hour due to failure of AAT in providing mechanical breakdown support, reported from the time Mechanical Engineer officially notified to the time the issue was resolved.		Average time lost	Explanation
	<b>Quarter 1</b>		
	Qube	<b>N/A</b>	Compliance report not applicable in this period
	Linx	<b>N/A</b>	Compliance report not applicable in this period
	<b>Quarter 2</b>		
	Qube	<b>Zero</b>	
	Linx	<b>N/A</b>	No vessels handled in the reporting period
<b>KPI 9 Cargo dwell time over free time/long terms storage</b>  Time cargo units stay over free time, excluding Customs, DAFF and customer hold.		Units/percentage	Explanation
	<b>Quarter 1</b>	<b>Services to Qube</b>	Compliance report not applicable in this period
		<b>Services to Qube</b>	
	Total Cargo Units	<b>0</b>	
	Units staying over free time	<b>0</b>	
	Units over free time due Customs/Daff or customer	<b>0</b>	
	Units staying over free time excluding Customs etc. as percentage of total units	<b>0%</b>	
			Compliance report not applicable in this period
	<b>Services to Linx</b>		
	Total Cargo Units	<b>0</b>	
	Units staying over free time	<b>0</b>	
	Units over free time due Customs/Daff or customs	<b>0</b>	
	Units staying over free time excluding Customs etc. as percentage of total units	<b>0%</b>	
	<b>Quarter 2</b>		
		<b>Services to Qube</b>	
	Total Cargo Units	<b>10</b>	
	Units staying over free time	<b>0</b>	
	Units over free time due Customs/Daff or customer	<b>0</b>	
	Units staying over free time excluding Customs etc. as percentage of total units	<b>0%</b>	
			No vessels handled
<b>Services to Linx</b>			
Total Cargo Units	<b>0</b>		
Units staying over free time	<b>0</b>		
Units over free time due Customs/Daff or customer	<b>0</b>		
Units staying over free time excluding Customs etc. as percentage of total units	<b>0%</b>		






**AAT BI-ANNUAL COMPLIANCE REPORT – MELBOURNE TERMINAL**

**REPORT PERIOD: 1<sup>ST</sup> Jan 2024 to 25<sup>th</sup> Jun 2024**

**DATE OF REPORT: 30<sup>th</sup> August 2024**

**1. Complaints raised either directly with AAT or under the Non-Price Dispute Resolution Process**

No.	Type of Complaint	Outcome of the Complaint
NIL		

**2. Breaches of Clause 6 – Confidentiality and Ring-Fencing**

No.	Type of Breach	Details of Breach	Response to the Breach
NIL			

**3. Access Services**

Details of any circumstance in which AAT offers Access Services to Qube or any other Qube Related Entity that are more favourable than the terms offered to any other Service Provider.

**NIL**

**4. Contractual Arrangements**

Details of any offer, or any contractual arrangement between AAT and a shipping line, that involved terms that:

- (A) link or otherwise relate in any way to the shipping line using Qube or a Qube Related Entity to supply Terminal Services at Melbourne Terminal;
- (B) obliged the shipping line to engage suppliers of Terminal Services that met certain requirements that only Qube or a Qube Related Entity could satisfy;

as described in clause 5 of the Variation to the Undertaking.

**NIL**

Attachment A

## **KPI 6**

Allocation of first point of rest

Fisherman Islands

Jan 1 – Jun 30, 2024

## JANUARY

NUMBER	DATE	STEVE-DORE	VESSEL	VOYAGE	STARTING SHIFT	BERTH #	BERTH DELAY	LAYDOWN	MACHINERY REQUEST RECEIVED	MACHINERY REQUEST FILLED	MACHINERY ISSUES	NOTES
1	26/0600	QP	CARMEN	EF321	DAY	1	152	A & C	YES	YES	NIL	Awaiting departure of Don Juan
2	25/0500	QP	AAL GEELONG	23006	DAY	3	NIL	UHOOK	YES	YES	NIL	
3	23/0900	LINX	POSITIVE LEADER	116	EVE	1	240	A, C, D & M	YES	YES	NIL	Awaiting departure of Carmen and yard space
4	27/0930	QP	PENGUIN ARROW	2307	DAY	2	136	OS	YES	YES	NIL	Awaiting departure of Carmen from Berth 1
5	28/1500	LINX	HOEGH TRAVELLER	42	EVE	1	136	A, C & M	YES	YES	NIL	Awaiting departure of Positive Leader
6	29/0430	LINX	DIGNITY LEADER	1	DAY	1	160	A & C	YES	YES	NIL	Awaiting departure of Hoegh Traveller
7	04/1200	TML	BBC OCEAN	220	EVE	2	NIL	B & OTP	YES	YES	NIL	
8	31/0355	QP	VENUS SPIRIT	73	DAY	1	136	B & C	YES	YES	NIL	Awaiting departure of Dignity Leader and yard space
9	05/1400	TML	HIGHLAND CHIEF	2324S/2402N	MIDNIGHT	2	NIL	B	YES	YES	NIL	
10	05/1700	LINX	TRANS FUTURE 6	148	DAY	1	32	D & M	YES	YES	NIL	Awaiting departure of Venus Spirit and yard space
11	05/1400**	LINX	OT IDEEAL	35	DAY	2	32	B & OTP	YES	YES	NIL	Awaiting departure of Highland Chief
12	04/0854	LINX	APHRODITE LEADER	41	EVE	1	120	A, C, D & M	YES	YES	NIL	Awaiting departure of Silver Queen and yard space
13	02/1315	QP	AAL HONG KONG	24001	DAY	3	8	OS & J	YES	YES	NIL	Awaiting departure of AAL Geelong
14	04/1020	LINX	SILVER QUEEN	3	EVE	1	104	A, C & M	YES	YES	NIL	Awaiting departure of Trans Future 6 and yard space
15	05/0530	QP	PARSIFAL	EZ303	EVE	3	152	E	YES	YES	NIL	Awaiting departure of AAL Hong Kong
16	04/2230	QP	WALRUS ACE	41	EVE	1	184	A, B & C	YES	YES	NIL	Awaiting departure of Silver Queen and yard space
17	04/0806	LINX	DREAM JASMINE	31	DAY	1	216	C & M	YES	YES	NIL	Awaiting departure of Walrus Ace
18	07/1800	QP	VIKING PASSAMA	2378	EVE	1	160	D & M	YES	YES	NIL	Awaiting departure of Dream Jasmine and SPI appointment
19	11/1400	LINX	GLORIOUS LEADER	37	EVE	1	96	A, C, D & M	YES	YES	NIL	Awaiting departure of Viking Passama and yard space
20	14/1800	QP	PIA	1306022	DAY	2	8	B	YES	YES	NIL	
21	12/0500	QP	MORNING CRYSTAL	2379	EVE	1	104	A & C	YES	YES	NIL	Awaiting departure of Glorious Leader and yard space
22	15/1300	TML	MELANESIAN CHIEF	2401S/2403N	MIDNIGHT	2	24	B	YES	YES	NIL	Awaiting departure of Pia
23	12/0900	QP	IGUAZU HIGHWAY	49	EVE	1	128	A, B, C & D	YES	YES	NIL	Awaiting departure of Morning Crystal and yard space
24	13/1300	QP	RCC ANTWERP	1	EVE	1	120	A & C	YES	YES	NIL	Awaiting departure of Iguazu Hwy and yard space
25	13/0700	QP	CHIPOL HUANGHE	60	EVE	3	16	UHOOK	YES	YES	NIL	Await daylight pilotage
26	14/2000	QP	TOMBARRA	EE321	EVE	1	112	A, C & D	YES	YES	NIL	Awaiting departure of RCC Antwerp and yard space
27	18/1900	TML	CORAL CHIEF	2401S/2403N	MIDNIGHT	2	NIL	B	YES	YES	NIL	
28	18/2300	QP	RCC ASIA	14	DAY	1	24	B & M	YES	YES	NIL	Awaiting departure of Tombarra
29	21/0100	QP	TYSLA	NZ302	MIDNIGHT	1	NIL	A & C	YES	YES	NIL	Awaiting departure of RCC Asia and SPI appointment
30	20/2300	TML	BBC OCEAN	221	DAY	2	NIL	B	YES	YES	NIL	
31	15/2100	QP	GREBE ARROW	2308	EVE	3	88	NS, J & F2	YES	YES	NIL	Awaiting departure of Chipol Huanghe
32	23/2000	LINX	BBC MARMARA	17	DAY	2	NIL	B	YES	YES	NIL	
33	21/1700	LINX	CL LINDY	232550	EVE	3	24	UHOOK	YES	YES	NIL	Awaiting departure of Grebe Arrow
34	25/0700	QP	PAGANELLA	2451	EVE	1	NIL	A & C	YES	YES	NIL	
35	24/2100	TML	ARKADIA	2402S/2404N	EVE	2	8	B & OTP	YES	YES	NIL	Awaiting departure of BBC Marmara
36	27/1200	QP	PIA	1306023	DAY	2	NIL	OTP & F1	YES	YES	NIL	
37	29/0915	LINX	HOEGH TRIGGER	48	EVE	1	NIL	A, C & D	YES	YES	NIL	
38	25/0530	QP	AAL SHANGHAI	23010	DAY	3	16	OS & F2	YES	YES	NIL	Awaiting departure of CL Lndy
39	29/1900	QP	SOUTHERN HIGHWAY	124	EVE	1	8	A, C & D	YES	YES	NIL	Awaiting departure of Hoegh Trigger

**Legend - Berth # and Laydown**

	Primary
	Secondary
	Tertiary

SUMMARY	LINX	QUBE	TML	COMMENT
<b>TOTAL VESSELS FOR MONTH</b>	<b>12</b>	<b>21</b>	<b>6</b>	
<b>GREEN BERTH (Primary)</b>	<b>12</b>	<b>21</b>	<b>6</b>	
<b>ORANGE BERTH (Secondary)</b>	<b>0</b>	<b>0</b>	<b>0</b>	
<b>RED BERTH (Tertiary)</b>	<b>0</b>	<b>0</b>	<b>0</b>	
<b>GREEN LAYDOWN (Primary)</b>	<b>4</b>	<b>17</b>	<b>6</b>	
<b>ORANGE LAYDOWN (Secondary)</b>	<b>8</b>	<b>4</b>	<b>0</b>	
<b>RED LAYDOWN (Tertiary)</b>	<b>0</b>	<b>0</b>	<b>0</b>	
<b>NUMBER OF BERTHING DELAYS</b>	<b>10</b>	<b>17</b>	<b>2</b>	Swire work on Fixed Day Windows
<b>NUMBER OF MACHINERY ISSUES/REQUESTS NOT MET</b>	<b>0</b>	<b>0</b>	<b>0</b>	

**FEBRUARY**

NUMBER	DATE	STEVE-DORE	VESSEL	VOYAGE	STARTING SHIFT	BERTH #	BERTH DELAY	LAYDOWN	MACHINERY REQUEST RECEIVED	MACHINERY REQUEST FILLED	MACHINERY ISSUES	NOTES
1	28/0800	TML	TUNSIN	2309	DAY	3	64HRS	NS	YES	YES	NIL	Awaiting departure of AAL Shanghai
2	29/0645	LINX	JUPITER LEADER	61	EVE	1	64HRS	A	YES	YES	NIL	Awaiting departure of Southern Hwy
3	28/0930	QUBE	FREDERIKKE	FK001	MID	2	16HRS	UHOOK	YES	YES	NIL	Awaiting departure of OT Ideaal
4	30/0200	LINX	TRANS FUTURE 5	151	DAY	1	64HRS	A,C & D	YES	YES	NIL	Awaiting departure of Jupiter Leader
5	01/1800	TML	HIGHLAND CHIEF	2402S	EVE	2	8HRS	B	YES	YES	NIL	Awaiting departure of Frederikke
6	30/1130	QUBE	ARC COMMITMENT	EF323	EVE	1	80HRS	A & C	YES	YES	NIL	Awaiting departure of Trans Future 5
7	02/1800	LINX	DOLFJINGRACHT	2401	MID	2	16HRS	FRONT OS	YES	YES	NIL	Awaiting departure of Highland Chief
8	01/0600	LINX	HOEGH LONDON	108	DAY	1	64HRS	A & D	YES	YES	NIL	Awaiting departure of Arc Commitment
9	01/1430	QUBE	GRAND VICTORY	23	DAY	1	80HRS	A,B,D	YES	YES	NIL	Awaiting departure of Hoegh London
10	05/0500	QUBE	GRACIOUS ACE	92	DAY	1	16HRS	A,D	YES	YES	NIL	Awaiting departure of Grad Victory
11	01/1500	TML	ATLAS WIND	012E	EVE	2	48HRS	B	YES	YES	NIL	Awaiting departure of Atlas Wind
12	28/1000	QUBE	AAL GENOA	24001	DAY	3	104HRS	UHOOK	YES	YES	NIL	Awaiting departure of Tunsin
13	05/0900	QUBE	FIRMAMENT ACE	135	DAY	1	40HRS	A, C & D	YES	YES	NIL	Awaiting departure of Gracious Ace
14	06/1800	LINX	BEATE OLDENDORFF	2400092	EVE	2	8HRS	UHOOK	YES	YES	NIL	Await daylight pilotage
15	05/0600	QUBE	STAR JAPAN	2401	EVE	3	56HRS	NS, FRONT OS, J	YES	YES	NIL	Awaiting departure of AAL Genoa
16	05/0600	LINX	POSITIVE LEADER	117	DAY	1	88HRS	A, C & D	YES	YES	NIL	Awaiting departure of Firmament Ace and yard space
17	11/0500	LINX	HYPERION LEADER	121	EVE	3	NIL	F2	YES	YES	NIL	Awaiting departure of Star Japan and SPI appointment
18	07/0200	LINX	GRAND DOLPHIN	16	EVE	1	128HRS	A & M	YES	YES	NIL	Awaiting departure of Positive Leader and yard space
19	07/2100	LINX	RIGEL LEADER	14	EVE	1	128HRS	A, C, D & B	YES	YES	NIL	Awaiting departure of Grand Dolphin and yard space
20	13/1000	TML	POLYNESIA	988N	EVE	2	NIL	B	YES	YES	NIL	
21	08/1400	QUBE	DON JUAN	2452	DAY	1	128HRS	A, C & M	YES	YES	NIL	Awaiting departure of Rigel Leader
22	11/0730	LINX	HOEGH ASIA	170	DAY	1	88HRS	A, C & D	YES	YES	NIL	Awaiting departure of Don Juan
23	14/2230	TML	MELANESIAN CHIEF	2403S/2405N	DAY	2	NIL	B	YES	YES	NIL	
24	12/1600	LINX	TRANS FUTURE 7	149	EVE	1	96HRS	A & C	YES	YES	NIL	Awaiting departure of Hoegh Asia and yard space
25	14/1030	QUBE	AAL DALIAN	24001	MID	3	NIL	OS,J, AWNING, F1	YES	YES	NIL	
26	15/1600	TML	BBC PACIFIC	313	DAY	2	8HRS	B	YES	YES	NIL	Awaiting departure of Melanesian Chief
27	15/1900	QUBE	GRAND RUBY	1	DAY	3	48HRS	NS, WF3	YES	YES	NIL	Awaiting departure of Grand Ruby
28	14/2315	LINX	APHRODITE LEADER	42	EVE	1	56HRS	A, C & D	YES	YES	NIL	Awaiting departure of Trans Future 7
29	16/0700	TML	CORAL CHIEF	2403S/2405N	MID	2	32HRS	B	YES	YES	NIL	Awaiting departure of BBC Pacific
30	16/1700	LINX	OT IDEAL	2	EVE	2	64HRS	B	YES	YES	NIL	Awaiting departure of Coral Chief
31	16/0700	QUBE	THEMIS	1	DAY	1	88HRS	A & C	YES	YES	NIL	Awaiting departure of Aphrodite Leader and yard space
32	19/0730	LINX	BBC MARMARA	18	DAY	2	48HRS	B	YES	YES	NIL	Awaiting departure of OT Ideaal
33	18/0500	LINX	GRAND QUEST	24GQ01	EVE	3	80HRS	E & F	YES	YES	NIL	Awaiting yard space
34	21/0730	QUBE	LAPIS ARROW	22	DAY	3	16HRS	NS	YES	YES	NIL	Awaiting departure of Lapis Arrow
35	17/1200	QUBE	LAKE FUXIAN	1	DAY	1	80HRS	A, C & D	YES	YES	NIL	Awaiting departure of Themis
36	22-Feb	TML	BBC PACIFIC	313 (RETURN)	MID	3	NIL	B	YES	YES	NIL	
37	22/0900	TML	ARKADIA	2404S/2406N	EVE	2	NIL	B	YES	YES	NIL	
38	20/1530	QUBE	IVORY ARROW	154	DAY	1	56HRS	A & C	YES	YES	NIL	Awaiting departure of Lake Fuxian
39	24/0400	QUBE	SIERRA NEVADA HIGHWAY	166	EVE	1	NIL	D	YES	YES	NIL	
40	22/1300	QUBE	AAL BANGKOK	24002	DAY	3	8HRS	OS & J	YES	YES	NIL	Awaiting departure of BBC Pacific
41	26/0600	LINX	CSAV RIO NEVADA	24RN01	EVE	1	NIL	A & C	YES	YES	NIL	
42	23-Feb	TML	NORFOLK	007E	DAY	3	NIL	REEFER	YES	YES	NIL	
43	26/0800	QUBE	WALRUS ACE	42	EVE	1	24HRS	A,C,D & GB	YES	YES	NIL	Awaiting departure of CSAV Rio Nevado and yard space
44	24/1100	QUBE	BBC CHALLENGER	1219040	DAY	2	NIL	OTP & WF2	YES	YES	NIL	
45	27/0001	LINX	DREAM JASMINE	32	DAY	1	48HRS	A & D	YES	YES	NIL	Awaiting departure of Walrus Ace
46	28/1000	TML	HIGHLAND CHIEF	2404S/2406N	EVE	2	NIL	B	YES	YES	NIL	

**Legend - Berth # and Laydown**

	Primary
	Secondary
	Tertiary

SUMMARY	LINX	QUBE	TML	COMMENT
<b>TOTAL VESSELS FOR MONTH</b>	<b>17</b>	<b>18</b>	<b>11</b>	
<b>GREEN BERTH (Primary)</b>	<b>17</b>	<b>18</b>	<b>11</b>	
<b>ORANGE BERTH (Secondary)</b>	<b>0</b>	<b>0</b>	<b>0</b>	
<b>RED BERTH (Tertiary)</b>	<b>0</b>	<b>0</b>	<b>0</b>	
<b>GREEN LAYDOWN (Primary)</b>	<b>9</b>	<b>11</b>	<b>11</b>	
<b>ORANGE LAYDOWN (Secondary)</b>	<b>8</b>	<b>7</b>	<b>0</b>	
<b>RED LAYDOWN (Tertiary)</b>	<b>0</b>	<b>0</b>	<b>0</b>	
<b>NUMBER OF BERTHING DELAYS</b>	<b>15</b>	<b>15</b>	<b>5</b>	
<b>NUMBER OF MACHINERY ISSUES/REQUESTS NOT MET</b>	<b>0</b>	<b>0</b>	<b>0</b>	

## MARCH

NUMBER	DATE	STEVE-DORE	VESSEL	VOYAGE	STARTING SHIFT	BERTH #	BERTH DELAY	LAYDOWN	MACHINERY REQUEST RECEIVED	MACHINERY REQUEST FILLED	MACHINERY ISSUES	NOTES
1	27/0430	TML	YANGTZE FLOURISH	2401	MID	3	NIL	NS, F2 & J	YES	YES	NIL	
2	28/2200	QUBE	BBC GANGES	1110073	DAY	2	24HRS	OS & F1	YES	YES	NIL	Awaiting departure of Highland Chief
3	01/1815	LINX	HOEGH BERLIN	124	MID	1	NIL	A & C	YES	YES	NIL	
4	03/0600	LINX	MERWEDEGRACHT	2402	DAY	2	NIL	TP	YES	YES	NIL	
5	02/0900	QUBE	BBC EMSLAND	1212045	EVE	3	NIL	H, J & WF3	YES	YES	NIL	
6	03/0830	LINX	OCEANUS LEADER	81	MID	1	16HRS	A, C, D & M	YES	YES	NIL	Awaiting departure of Hoegh Berlin and SPI appointment
7	05/0700	QUBE	VIKING PASSAMA	2453	EVE	2	NIL	F1, B & M	YES	YES	NIL	
8	07/1000	QUBE	ANIARA	NZ303	DAY	3	16HRS	E & F1	YES	YES	NIL	Awaiting yard space
9	07/0900	LINX	OT IDEAAL	38	MID	2	NIL	B	YES	YES	NIL	
10	06/0400	QUBE	OBERON	EF324	EVE	2	NIL	A & C	YES	YES	NIL	
11	09/0600	QUBE	THALATTA	EE324	DAY	1	16HRS	A & C	YES	YES	NIL	Awaiting departure of Oberon
12	09/0045	QUBE	PLOVER ARROW	2401	DAY	3	NIL	NS, J, F2	YES	YES	NIL	
13	11/1800	QUBE	HORIZON RAY	1	MID	1	NIL	A, C & D	YES	YES	NIL	
14	12/1500	TML	BBC PACIFIC	314	MID	2	NIL	B	YES	YES	NIL	
15	11/2030	LINX	TRANS FUTURE 6	149	DAY	1	48HRS	A, C & M	YES	YES	NIL	Awaiting departure of Horizon Ray
16	13/1300	TML	MELANESIAN CHIEF	2405S/2407N	EVE	2	16HRS	B	YES	YES	NIL	Awaiting departure of BBC Pacific
17	12/2200	QUBE	VIKING ADVENTURE	24	EVE	1	56HRS	A, D & M	YES	YES	NIL	Awaiting departure of Trans Future 6
18	14/2100	TML	CORAL CHIEF	2405S/2407N	EVE	2	16HRS	B	YES	YES	NIL	Awaiting departure of Melanesian Chief
19	13/1300	LINX	SPICA LEADER	61	EVE	1	72HRS	A, C & D	YES	YES	NIL	Awaiting departure of Viking Adventure
20	15-Mar	TML	ATLAS WIND	V012W/V013E	DAY	2	48HRS	B	YES	YES	NIL	Awaiting departure of Coral Chief
21	17/0900	LINX	BBC MARMARA	19	DAY	2	24HRS	B	YES	YES	NIL	Awaiting departure of Atlas Wind
22	13/0400	QUBE	GRAND VICTORY	24	EVE	1	104HRS	B, C & M	YES	YES	NIL	Awaiting departure of Spica Leader
23	09/1200	QUBE	AAL HONG KONG	24003	DAY	3	112HRS	OS & FRONT	YES	YES	NIL	Awaiting departure of Plover Arrow
24	20/1500	TML	ARKADIA	2604S/2608N	MID	2	NIL	B, C & M	YES	YES	NIL	
25	13/1700	QUBE	GRAND VENUS	23	EVE	1	136HRS	A, C, D & M	YES	YES	NIL	Awaiting departure of Grand Victory
26	14/1300	QUBE	MORNING LISA	EF401	DAY	3	104HRS	NS	YES	YES	NIL	Awaiting departure of AAL Hong Kong and SPI appointment
27	16/0100	LINX	CASSIOPEIA LEADER	48	DAY	1	168HRS	A, C & M	YES	YES	NIL	Awaiting departure of Grand Venus
28	17/0600	QUBE	ANDROMEDA SPIRIT	164	MID	3	152HRS	M	YES	YES	NIL	Awaiting departure of Morning Lisa
29	17/1700	QUBE	TONSBERG	EE401	DAY	1	152HRS	A, C & D	YES	YES	NIL	Awaiting departure of Cassiopeia Leader
30	21/1630	LINX	GREAT AGILITY	2401	MID	3	72HRS	AWN, J & H	YES	YES	NIL	Awaiting departure of Andromeda Spirit
31	18/1430	LINX	ARTEMIS LEADER	123	MID	1	176HRS	A, C, D & M	YES	YES	NIL	Awaiting departure of Tonsberg
32	26/2100	TML	HIGHLAND CHIEF	2406S/2408N	DAY	2	NIL	B	YES	YES	NIL	
33	20/0042	QUBE	DOVER HIGHWAY	106	MID	1	192HRS	A & C	YES	YES	NIL	Awaiting departure of Artemis Leader
34	22/2330	QUBE	PALMELA	202	MID	3	136HRS	E	YES	YES	NIL	Awaiting departure of Great Agility
35	22/1500	QUBE	DON JUAN	2454	MID	3	120HRS	NS, H, L & M	YES	YES	NIL	Awaiting departure of Palmela
36	22/1130	LINX	HOEGH TRAPPER	44	DAY	1	160HRS	A, C, D & M	YES	YES	NIL	Awaiting departure of Dover Hwy
37	28/1200	LINX	OT IDEAAL	39	MID	2	8HRS	B	YES	YES	NIL	Awaiting departure of Highland Chief
38	22/2100	LINX	GENTLE LEADER	106	DAY	1	168HRS	D & M	YES	YES	NIL	Awaiting departure of Hoegh Trapper

**Legend - Berth # and Laydown**

	Primary
	Secondary
	Tertiary

SUMMARY	LINX	QUBE	TML	COMMENT
<b>TOTAL VESSELS FOR MONTH</b>	<u>13</u>	<u>18</u>	<u>7</u>	
<b>GREEN BERTH (Primary)</b>	<b>13</b>	<b>18</b>	<b>7</b>	
<b>ORANGE BERTH (Secondary)</b>	<b>0</b>	<b>0</b>	<b>0</b>	
<b>RED BERTH (Tertiary)</b>	<b>0</b>	<b>0</b>	<b>0</b>	
<b>GREEN LAYDOWN (Primary)</b>	<b>5</b>	<b>9</b>	<b>6</b>	
<b>ORANGE LAYDOWN (Secondary)</b>	<b>8</b>	<b>9</b>	<b>1</b>	
<b>RED LAYDOWN (Tertiary)</b>	<b>0</b>	<b>0</b>	<b>0</b>	
<b>NUMBER OF BERTHING DELAYS</b>	<b>10</b>	<b>13</b>	<b>3</b>	
<b>NUMBER OF MACHINERY ISSUES/REQUESTS NOT MET</b>	<b>0</b>	<b>0</b>	<b>0</b>	

**APRIL**

NUMBER	DATE	STEVE-DORE	VESSEL	VOYAGE	STARTING SHIFT	BERTH #	BERTH DELAY	LAYDOWN	MACHINERY REQUEST RECEIVED	MACHINERY REQUEST FILLED	MACHINERY ISSUES	NOTES
1	31/1000	TML	BBC PACIFIC	315	MID	2	NIL	B	YES	YES	NIL	
2	23/1930	QUBE	AAL SHANGHAI	24002	DAY	3	152HRS	OS, J, OTP & WF3	YES	YES	NIL	Awaiting departure of Don Juan
3	26/0600	LINX	TRANS FUTURE 5	152	DAY	1	168HRS	A & C	YES	YES	NIL	Awaiting departure of Gentle Leader
4	27/0900	QUBE	GLOVIS COUNTESS	34	EVE	1	168HRS	A, C & M	YES	YES	NIL	Awaiting departure of Trans Future 5
5	30/1530	TML	TATUNG	2401	DAY	3	64HRS	NS & F1	YES	YES	NIL	Awaiting departure of AAL Shanghai
6	29/1200	QUBE	ORCA ACE	46	EVE	1	144HRS	A, C, D & M	YES	YES	NIL	Awaiting departure of Glovis Countess
7	30/1900	QUBE	AMBER ARROW	149	EVE	3	104HRS	OTP, L & E	YES	YES	NIL	Awaiting departure of Taitung
8	02/1600	LINX	KARIYUSHI LEADER	71	EVE	1	64HRS	A,B,C,D & M	YES	YES	NIL	Awaiting departure of Orca Ace
9	04/0830	QUBE	TURANDOT	2403	DAY	3	40HRS	F2	YES	YES	NIL	Awaiting departure of Amber Arrow
10	06/0100	QUBE	NORTHERN HIGHWAY	149	EVE	1	8HRS	A, C, D & M	YES	YES	NIL	Awaiting departure of Kariyushi Leader
11	01/0900	QUBE	AAL GEELONG	24003	EVE	2	32HRS	UH	YES	YES	NIL	Awaiting departure of BBC Pacific
12	06/2200	LINX	CENTAURUS LEADER	49	EVE	1	40HRS	A, B, C & D	YES	YES	NIL	Awaiting departure of Northern Hwy
13	08/0030	TML	MELANESIAN CHIEF	2407S/2409N	DAY	2	NIL	B	YES	YES	NIL	
14	07/0600	QUBE	VIKING PAGLIA	2455	EVE	1	56HRS	A, C & D	YES	YES	NIL	Awaiting departure of Centaurus Leader and yard space
15	07/1300	QUBE	PENGUIN ARROW	2402	EVE	3	24HRS	NS, OS, J & F1	YES	YES	NIL	Awaiting yard space
16	08/0630	LINX	TRANS FUTURE 7	150	EVE	1	56HRS	A, C & D	YES	YES	NIL	Awaiting departure of Viking Paglia and yard space
17	10/1000	TML	CORAL CHIEF	2407S/2409N	EVE	2	NIL	B	YES	YES	NIL	
18	11/0700	QUBE	POTENTIA	6003	EVE	3	NIL	OS, J & WF3	YES	YES	NIL	
19	08/1700	QUBE	FIDELIO	EF402	DAY	1	56HRS	C	YES	YES	NIL	Awaiting departure of Trans Future 7 and SPI appointment
20	10/0130	LINX	BBC MARMARA	20	MID	2	40HRS	B	YES	YES	NIL	Awaiting departure of Coral Chief
21	09/0630	QUBE	WALRUS ACE	43	DAY	1	96HRS	C, D & M	YES	YES	NIL	Awaiting departure of Fidelio
22	12/1400	LINX	OT IDEAAL	40	DAY	2	16HRS	B	YES	YES	NIL	Awaiting departure of BBC Marmara
23	09/1300	QUBE	SOUTHERN HIGHWAY	126	DAY	1	104HRS	A, B, C & D	YES	YES	NIL	Awaiting departure of Walrus Ace
24	11/2200	LINX	HOEGH SHANGHAI	111	DAY	3	72HRS	F2, L & M	YES	YES	NIL	Awaiting yard space
25	12/1000	QUBE	MORNING CRYSTAL	2456	EVE	1	80HRS	A, C & D	YES	YES	NIL	Awaiting departure of Southern Hwy and yard space
26	16/0800	QUBE	GRAND AURORA	5	DAY	1	24HRS	A, C & D	YES	YES	NIL	Awaiting departure of Beluga Ace and SPI appointment
27	17/1200	TML	ARKADIA	2408S/2410N	EVE	2	NIL	B	YES	YES	NIL	
28	17/0600	QUBE	TITANIA	EF403	DAY	3	NIL	E	YES	YES	NIL	
29	16/1300	LINX	POSITIVE LEADER	119	MID	1	56HRS	A, C, D & M	YES	YES	NIL	Awaiting departure of Grand Aurora
30	19/1100	TML	NORFOLK	007W/008E	DAY	2	NIL	B	YES	YES	NIL	
31	16/2000	QUBE	GLOVIS CROWN	1	EVE	1	88HRS	A, B, D & M	YES	YES	NIL	Awaiting departure of Positive Leader and yard space
32	21/0300	QUBE	BBC NILE	3065	DAY	2	NIL	OS	YES	YES	NIL	
33	19/1445	QUBE	UHL FOCUS	2402	MID	3	NIL	F2, J & OTP	YES	YES	NIL	
34	14/1530	QUBE	BELUGA ACE	52	EVE	1	NIL	A, C, D & M	YES	YES	NIL	
35	23/1800	QUBE	TIANJIN HIGHWAY	161	MID	2	NIL	M	YES	YES	NIL	
36	19/1300	LINX	GRAND DOLPHIN	17	EVE	1	96HRS	D & M	YES	YES	NIL	Awaiting departure of Beluga Ace
37	24/0900	TML	HIGHLAND CHIEF	2408S/2410N	EVE	2	NIL	B	YES	YES	NIL	
38	21/0001	LINX	HOEGH JEDDAH	61	DAY	1	96HRS	C & D	YES	YES	NIL	Awaiting departure of Grand Dolphin
39	21/0930	QUBE	NEPTUNE ACE	107	DAY	1	112HRS	A & D	YES	YES	NIL	Awaiting departure of Hoegh Jeddah
40	25/0100	TML	BBC PACIFIC	316	EVE	2	8HRS	B	YES	YES	NIL	Awaiting departure of Highland Chief
41	25/1130	TML	YANGTZE CLASSIC	2402	EVE	3	NIL	F1, WF3	YES	YES	NIL	
42	21/1600	QUBE	PAGANELLA	2457	MID	1	120HRS	A, C, WF1, GB	YES	YES	NIL	Awaiting departure of Neptune Ace
43	26/0200	QUBE	CMA CGM CORNEILLE	415S	DAY	2	24HRS	UHOOK	YES	YES	NIL	Awaiting departure of BBC Pacific
44	23/0045	QUBE	GRAND PACE	34	DAY	1	120HRS	A, B, C & D	YES	YES	NIL	Awaiting departure of Paganella
45	23/2130	LINX	NEW CENTURY 1	187	DAY	1	120HRS	A, C & D	YES	YES	NIL	Awaiting departure of Grand Pace
46	29/1700	LINX	OT IDEAAL	41	MID	2	NIL	B	YES	YES	NIL	
47	24/1800	QUBE	TONGALA	EE403	DAY	1	136HRS	A, C, D, GB, WF1, T	YES	YES	NIL	Awaiting departure of New Century 1

**Legend - Berth # and Laydown**

- Primary
- Secondary
- Tertiary

SUMMARY	LINX	QUBE	TML	COMMENT
<b>TOTAL VESSELS FOR MONTH</b>	<u>12</u>	<u>26</u>	<u>9</u>	
<b>GREEN BERTH (Primary)</b>	12	26	9	
<b>ORANGE BERTH (Secondary)</b>	0	0	0	
<b>RED BERTH (Tertiary)</b>	0	0	0	
<b>GREEN LAYDOWN (Primary)</b>	4	6	9	
<b>ORANGE LAYDOWN (Secondary)</b>	8	20	0	
<b>RED LAYDOWN (Tertiary)</b>	0	0	0	
<b>NUMBER OF BERTHING DELAYS</b>	11	20	2	
<b>NUMBER OF MACHINERY ISSUES/REQUESTS NOT MET</b>	0	0	0	

MAY

NUMBER	DATE	STEVE-DORE	VESSEL	VOYAGE	STARTING SHIFT	BERTH #	BERTH DELAY	LAYDOWN	MACHINERY REQUEST RECEIVED	MACHINERY REQUEST FILLED	MACHINERY ISSUES	NOTES
1	25/1300	QUBE	ADRIA ACE	139	DAY	1	136HRS	A, C, D & WF1	YES	YES	NIL	Awaiting departure of Tongala
2	28/1430	QUBE	KARIOS TRUIMPH	178	DAY	2	64HRS	OTP, WF2	YES	YES	NIL	Awaiting departure of OT Ideaal
3	26/0800	QUBE	BBC CHALLENGER	1219042	MID	3	40HRS	NS, F2	YES	YES	NIL	Awaiting departure of CMA CGM Corneille
4	03/1530	LINX	PLUTO LEADER	51	MID	1	NIL	A, C, D & WF1	YES	YES	NIL	
5	03/0500	TML	ATLAS WIND	013W/014E	DAY	2	48HRS	B	YES	YES	NIL	Awaiting departure of Kairos Triumph
6	05/1200	QUBE	TURANDOT	2458	DAY	1	NIL	A & C	YES	YES	NIL	
7	04/1200	TML	MELANESIAN CHIEF	2409S/2411N	DAY	2	16HRS	B	YES	YES	NIL	Awaiting departure of Atlas Wind
8	04/0500	QUBE	AAL DAMPIER	24004	DAY	3	48HRS	NS & J	YES	YES	NIL	Awaiting departure of BBC Challenger
9	06/1000	LINX	BBC MARMARA	21	EVE	2	NIL	B	YES	YES	NIL	
10	05/2100	QUBE	RCC TIANJIN	11	DAY	GB	32HRS	A & C	YES	YES	NIL	Awaiting yard space
11	06/1900	QUBE	TORRENS	NZ403	MID	1	NIL	A & C	YES	YES	NIL	
12	07/1700	LINX	TRANS FUTURE 6	150	DAY	2	8HRS	B & F	YES	YES	NIL	Awaiting departure of BBC Marmara
13	08/1600	QUBE	BBC RUBY	1170030	DAY	2	8HRS	OS	YES	YES	NIL	Awaiting departure of Trans Future 6
14	05/2100	QUBE	ANNAMARIA	6	DAY	3	128HRS	J	YES	YES	NIL	Awaiting departure of AAL Dampier
15	08/2300	TML	CORAL CHIEF	2409S/2411N	DAY	2	48HRS	B	YES	YES	NIL	Awaiting departure of BBC Ruby
16	09/2330	QUBE	VIKING DIAMOND	59	DAY	1	8HRS	A & C	YES	YES	NIL	Awaiting departure of Torrens and yard space
17	10/0900	QUBE	DOVER HIGHWAY	107	DAY	1	40HRS	A & D	YES	YES	NIL	Awaiting departure of Viking Diamond
18	12/1500	TML	PACIFIC HONOUR	24002	MID	2	NIL	OTP & F2	YES	YES	NIL	
19	10/0100	QUBE	SALVIA ACE	156	MID	1	16HRS	B & M	YES	YES	NIL	Awaiting departure of Dover Hwy
20	13/1000	QUBE	STAR KIRKENES	2403	DAY	3	40HRS	NS & F	YES	YES	NIL	Awaiting departure of Annamaria
21	15/0200	QUBE	SUNRISE ACE	126	DAY	1	NIL	A, C & D	YES	YES	NIL	
22	15/0930	TML	ARKADIA	2410S/2412N	EVE	2	NIL	B	YES	YES	NIL	
23	26/2100	QUBE	GRAND RACE	1	DAY	1	24HRS	A & D	YES	YES	NIL	Awaiting departure of Sunrise Ace
24	12/1600	QUBE	EASTERN HIGHWAY	152	DAY	1	24HRS	A & C	YES	YES	NIL	Awaiting departure of Grand Race
25	16/05/2024	LINX	OT IDEAAL	41	DAY	2	8HRS	B	YES	YES	NIL	Awaiting departure of Arkadia
26	16/0900	LINX	HOEGH ST PETERSBURG	87	DAY	1	48HRS	A, C & D	YES	YES	NIL	Awaiting departure of Eastern Hwy
27	14/1730	QUBE	GENIUS STAR XI	5001	DAY	2	88HRS	OTP AND WF2	YES	YES	NIL	Awaiting departure of OT Ideaal
28	17/05/2024	LINX	ANNAMARIA	001B	DAY	3	16HRS	B	YES	YES	NIL	Awaiting departure of Star Kirkenes
29	15/1500	QUBE	AAL HONG KONG	24005	DAY	3	80HRS	B & UH	YES	YES	NIL	Awaiting departure of Annamaria
30	19/0700	LINX	APHRODITE LEADER	45	DAY	1	16HRS	A, C, B & M	YES	YES	NIL	Awaiting departure of Hoegh St Petersburg
31	18/1100	QUBE	PIA	130602	MID	2	56HRS	OTP, NTP & B	YES	YES	NIL	Awaiting departure of Genius Star XI
32	18/0930	QUBE	MARTORELL	167	DAY	1	24HRS	A, C, D & M	YES	YES	NIL	Awaiting departure of Aphrodite Leader
33	22/0900	TML	HIGHLAND CHIEF	2410S/2412N	EVE	2	NIL	B	YES	YES	NIL	
34	20/1600	LINX	TRANS FUTURE 5	153	EVE	1	64HRS	B & D	YES	YES	NIL	Awaiting departure of Martorell
35	21/1130	TML	HANYANG	2403	MID	2	56HRS	OS, OTP & F2	YES	YES	NIL	Awaiting departure of Highland Chief
36	21/1200	LINX	HARVEST LEADER	79	DAY	1	64HRS	A, B, C, D & M	YES	YES	NIL	Awaiting departure of Trans Future 5
37	22/0300	LINX	HOEGH TRAVELLER	44	DAY	1	72HRS	A, C, D & M	YES	YES	NIL	Awaiting departure of Harvest Leader
38	22/0700	TML	BBC PACIFIC	317	DAY	2	72HRS	B	YES	YES	NIL	Awaiting departure of Hanyang
39	22/1200	QUBE	GENIUS HIGHWAY	72	EVE	1	96HRS	B & C	YES	YES	NIL	Awaiting departure of Hoegh Traveller
40	27/1500	QUBE	DREAM BEAUTY	21	DAY	1	8HRS	A, B & C	YES	YES	NIL	Awaiting departure of Genius Hwy
41	28/0130	LINX	KARIYUSHI LEADER	73	DAY	1	24HRS	A, C & D	YES	YES	NIL	Awaiting departure of Dream Beauty
42	20/2100	QUBE	AAL SHANGHAI	24004	DAY	3	208HRS	UHOOK	YES	YES	NIL	Awaiting departure of AAL Hong Kong
43	29/1200	TML	MELANESIAN CHIEF	2411S/2413N	EVE	2	NIL	B	YES	YES	NIL	
44	28/0830	QUBE	MANON	EE407	DAY	1	40HRS	A, C, D & M	YES	YES	NIL	Awaiting departure of Kariyushi Leader

Legend - Berth # and Laydown

	Primary
	Secondary
	Tertiary

SUMMARY	LINX	QUBE	TML	COMMENT
<b>TOTAL VESSELS FOR MONTH</b>	<b>16</b>	<b>24</b>	<b>9</b>	
<b>GREEN BERTH (Primary)</b>	<b>16</b>	<b>23</b>	<b>9</b>	
<b>ORANGE BERTH (Secondary)</b>	<b>0</b>	<b>1</b>	<b>0</b>	
<b>RED BERTH (Tertiary)</b>	<b>0</b>	<b>0</b>	<b>0</b>	
<b>GREEN LAYDOWN (Primary)</b>	<b>3</b>	<b>17</b>	<b>9</b>	
<b>ORANGE LAYDOWN (Secondary)</b>	<b>13</b>	<b>7</b>	<b>0</b>	
<b>RED LAYDOWN (Tertiary)</b>	<b>0</b>	<b>0</b>	<b>0</b>	
<b>NUMBER OF BERTHING DELAYS</b>	<b>14</b>	<b>21</b>	<b>5</b>	
<b>NUMBER OF MACHINERY ISSUES/REQUESTS NOT MET</b>	<b>0</b>	<b>0</b>	<b>0</b>	

**JUNE**

NUMBER	DATE	STEVE-DORE	VESSEL	VOYAGE	STARTING SHIFT	BERTH #	BERTH DELAY	LAYDOWN	MACHINERY REQUEST RECEIVED	MACHINERY REQUEST FILLED	MACHINERY ISSUES	NOTES
1	31/1700	LINX	OT IDEAAL	42	DAY	2	NIL	B	YES	YES	NIL	
2	30/2330	LINX	VIKING PASSERO	41	DAY	1	48HRS	A, C & M	YES	YES	NIL	Awaiting departure of Arc Honor
3	02/0200	LINX	CSAV RIO NEVADO	24RN03	MID	1	40HRS	A, C & D	YES	YES	NIL	Awaiting departure of Grand Pace
4	03/1400	LINX	BBC MARMARA	22	MID	2	NIL	B	YES	YES	NIL	
5	04/1400	LINX	TRANS FUTURE 7	151	MID	1	NIL	A, C, D & M	YES	YES	NIL	
6	03/0815*	TML	PACIFIC ENDEAVOUR	24001	EVE	2	48HRS	B	YES	YES	NIL	Awaiting departure of BBC Marmara
7	02/0500	QUBE	PLATINUM RAY	1	EVE	3	32HRS	E, F & K	YES	YES	NIL	Awaiting departure of AAL Shanghai
8	02/1330	QUBE	PAGANELLA	2460	DAY	1	88HRS	A, C & D	YES	YES	NIL	Awaiting departure of Trans Future 7 and SPI appointment
9	04/0430	QUBE	MORNING CRYSTAL	2459	DAY	1	96HRS	A, C & D	YES	YES	NIL	Awaiting departure of Paganella & pilotage suspension
10	06/1445	TML	CORAL CHIEF	2411S/2413N	DAY	3	40HRS	H BLOCK & REEFER	YES	YES	NIL	Awaiting departure of Platinum Ray & pilotage suspension
11	08/1400	QUBE	RCC TIANJIN	12	DAY	1	8HRS	A, C & M	YES	YES	NIL	Awaiting departure of Morning Crystal
12	06/0600	QUBE	SALOME	EE409	DAY	1	96HRS	A, C, & D	YES	YES	NIL	Awaiting departure of RCC Tianjin
13	07/1800	TML	ANNAMARIA	002B	DAY	2	64HRS	B	YES	YES	NIL	Awaiting planning & pilotage suspension
14	10/0100	QUBE	KITE ARROW	2403	DAY	3	NIL	NS & OUTSIDE OS	YES	YES	NIL	
15	09/2230	LINX	HOEGH TRIGGER	50	DAY	1	32HRS	A, C, D & M	YES	YES	NIL	Awaiting departure of Salome
16	10/0700	QUBE	TIJUCA	EF406	DAY	1	48HRS	C	YES	YES	NIL	Awaiting departure of Hoegh Trigger
17	12/0930	TML	ARKADIA	2412S/2414N	EVE	2	NIL	B	YES	YES	NIL	
18	10/1000	LINX	GREAT PROFIT	2402	DAY	3	64HRS	SIDE NS, J, NS & V	YES	YES	NIL	Awaiting departure of Kite Arrow
19	11/1630	QUBE	ORION HIGHWAY	84	MID	1	48HRS	A, C & D	YES	YES	NIL	Awaiting departure of Tijuca
20	11/1730	QUBE	GLOVIS CROWN	2	DAY	2	64HRS	B, F & M	YES	YES	NIL	Awaiting departure of Arkadia
21	11/1730	QUBE	GENIUS STAR IX	3	EVE	3	96HRS	H, J & REEFER	YES	YES	NIL	Awaiting departure of Great Profit
22	12/0530	QUBE	SALVIA ACE	157	EVE	1	72HRS	A, C & D	YES	YES	NIL	Awaiting departure of Orion Hwy
23	13/0150	LINX	GRAND QUEST	24GQ04	DAY	2	64HRS	D, M & L	YES	YES	NIL	Awaiting departure of Glovis Crown and yard space
24	13/0120	QUBE	TURANDOT	2461	EVE	1	104HRS	A, C & D	YES	YES	NIL	Awaiting departure of Salvia Ace and yard space
25	17/0600	LINX	OT IDEAAL	43	EVE	2	NIL	B	YES	YES	NIL	
26	13/1330	LINX	GREEN BAY	122	DAY	1	112HRS	C & M	YES	YES	NIL	Awaiting departure of Turandot
27	13/1930	QUBE	VIOLET ACE	111	DAY	1	128HRS	A & C	YES	YES	NIL	Awaiting departure of Green Bay
28	19/0930	TML	HIGHLAND CHIEF	2412S/2414N	EVE	2	NIL	B	YES	YES	NIL	
29	14/0600	QUBE	SWIFT ACE	132	DAY	1	120HRS	A & C	YES	YES	NIL	Awaiting departure of Violet Ace
30	16/1800	QUBE	VIKING DIAMOND	60	DAY	1	96HRS	A, C & D	YES	YES	NIL	Awaiting departure of Swift Ace
31	18/2200	LINX	NEW CENTURY 1	188	DAY	3	72HRS	OTP, F, NS & L	YES	YES	NIL	Awaiting departure of Genius Star IX
32	19/1600	QUBE	LEO SPIRIT	69	DAY	1	56HRS	A & C	YES	YES	NIL	Awaiting departure of Viking Diamond
33	21/1400	TML	NORFOLK	008W/009E	DAY	2	NIL	B	YES	YES	NIL	
34	20/0700	QUBE	AAL PUSAN	24003	DAY	3	48HRS	OS, J & REEFER	YES	YES	NIL	Awaiting departure of New Century 1
35	21/0830	LINX	HOEGH TRADER	173	MID	1	32HRS	A, C & D	YES	YES	NIL	Awaiting departure of Leo Spirit
36	22/1500	TML	PACIFIC ENDEAVOUR	2401A	MID	2	8HRS	B	YES	YES	NIL	Awaiting departure of Norfolk
37	21/1730	LINX	JUPITER LEADER	63	DAY	1	56HRS	A, C, D & M	YES	YES	NIL	Awaiting departure of Hoegh Trader and SPI appointment
38	21/0100	TML	GOLDEN CENTURY	2402	MID	2	88HRS	OS & F1	YES	YES	NIL	Awaiting departure of Pacific Endeavour and yard space
39	21/1800	LINX	POSITIVE LEADER	122	EVE	1	88HRS	A, C & D	YES	YES	NIL	Awaiting departure of Jupiter Leader and yard space
40	25/1830	QUBE	DOVER HIGHWAY	108	EVE	1	16HRS	A & C	YES	YES	NIL	Awaiting departure of Positive Leader and yard space
41	25/1930	QUBE	GLOVIS SAFETY	1	DAY	1	24HRS	A, C & D	YES	YES	NIL	Awaiting departure of Dover Hwy and SPI appointment
42	26/0230	LINX	ANNAMARIA	003B	DAY	2	24HRS	B	YES	YES	NIL	Awaiting departure of Golden Century
43	28/1600	QUBE	IVORY ARROW	156	MID	1	NIL	A, C & M	YES	YES	NIL	
44	27/0800	TML	BBC OCEAN	225	DAY	2	40HRS	B	YES	YES	NIL	Awaiting departure of Annamaria
45	26/0545	LINX	MERCURY LEADER	62	EVE	1	24HRS	A, C & M	YES	YES	NIL	Awaiting departure of Ivory Arrow
46	28/2130	QUBE	WALRUS ACE	45	DAY	1	32HRS	B, D & M	YES	YES	NIL	Awaiting departure of Mercury Leader
47	28/2200	TML	NPD L TAHITI	009N	DAY	3	42HRS	B	YES	YES	NIL	Awaiting departure of AAL Pusan

**Legend - Berth # and Laydown**

	Primary
	Secondary
	Tertiary

SUMMARY	LINX	QUBE	TML	COMMENT
<b>TOTAL VESSELS FOR MONTH</b>	<u>16</u>	<u>21</u>	<u>10</u>	
<b>GREEN BERTH (Primary)</b>	16	21	10	
<b>ORANGE BERTH (Secondary)</b>	0	0	0	
<b>RED BERTH (Tertiary)</b>	0	0	0	
<b>GREEN LAYDOWN (Primary)</b>	8	17	10	
<b>ORANGE LAYDOWN (Secondary)</b>	8	4	0	
<b>RED LAYDOWN (Tertiary)</b>	0	0	0	
<b>NUMBER OF BERTHING DELAYS</b>	12	19	7	
<b>NUMBER OF MACHINERY ISSUES/REQUESTS NOT MET</b>	0	0	0	



Attachment A

## **KPI 6**

Allocation of first point of rest

Port Kembla

Jan 1 – Jun 30, 2024

Port Kembla JAN 2024

NUMBER	DATE	STEVE-DORE	VESSEL	VOYAGE	STARTING SHIFT	BERTH #	BERTH DELAY	LAYDOWN	MACHINERY REQUEST RECEIVED	MACHINERY REQUEST FILLED	MACHINERY ISSUES	NOTES
1	1/01/2024	QUBE	SOUTHERN HIGHWAY	123	DAY	107	N	107CON, A BLOCK, B BLOCK, C BLOCK, D BLOCK, O BLOCK, Q BLOCK AND ESHED	Y	Y	N	D BLOCK AND B BLOCK UTILISED AS NOT ENOUGH SPACE IN A OR C BLOCKS
2	1/01/2024	QUBE	AAL BANGKOK	23011	EVENING	106	N	RAIL SIDING, I BLOCK AND PSHED	Y	Y	N	
3	3/01/2024	QUBE	DON JUAN	V2377	EVENING	105	N	B BLOCK, D BLOCK, F BLOCK, H BLOCK AND GEASTORE	Y	Y	N	VESSEL BERTHED AT 105 DUE TO 106 AND 107 BEING OCCUPIED.
4	4/01/2024	LINX	GRAND QUEST	23GQ05	DAY	106	N	J BLOCK, K BLOCK, L BLOCK AND M BLOCK	Y	Y	N	
5	4/01/2024	QUBE	CARMEN	EF321	EVENING	107	N	ESHED EAVES, A BLOCK, C BLOCK, O BLOCK, Q BLOCK AND ESHED	Y	Y	N	
6	9/01/2024	LINX	GLORIOUS LEADER	37	DAY	105	N	B BLOCK, D BLOCK AND GEARSTORE	Y	Y	N	VESSEL BERTHED AT 105 DUE TO 106 AND 107 BEING OCCUPIED. H BLOCK NOT UTILISED AS FULL
7	9/01/2024	QUBE	TRANS FUTURE 6	148	DAY	106	N	C BLOCK, D BLOCK, F BLOCK AND H BLOCK	Y	Y	N	C BLOCK UTILISED AS NOT ENOUGH SPACE IN H, F, D OR B BLOCKS
8	10/01/2024	QUBE	IGUAZU HIGHWAY	147	DAY	107	N	107CON, GSHED EAVES, C BLOCK, O BLOCK, Q BLOCK AND ESHED	Y	Y	N	
9	11/01/2024	QUBE	RCC TIANJIN	10	EVENING	107	N	A BLOCK, C BLOCK, O BLOCK AND Q BLOCK	Y	Y	N	
10	13/01/2024	QUBE	SALVIA ISLAND	1	DAY	103	N	DIRECT TO TRUCK	Y	Y	N	
11	13/01/2024	QUBE	BELUGA ACE	49	DAY	107	N	107CON, A BLOCK, B BLOCK, C BLOCK, Q BLOCK, D BLOCK AND ESHED	Y	Y	N	B BLOCK AND D BLOCK UTILISED AS NOT ENOUGH SPACE IN A OR C BLOCKS
12	13/01/2024	LINX	SILVER QUEEN	3	EVENING	106	N	F BLOCK, H BLOCK AND GEARSTORE	Y	Y	N	
13	14/01/2024	QUBE	NORD YILAN	2401	EVENING	105	N	DIRECT TO TRUCK	Y	Y	N	
14	15/01/2024	QUBE	DREAM JASMINE	31	DAY	107	N	D BLOCK, F BLOCK, A BLOCK, C BLOCK, O BLOCK, ESHED AND ESHED EAVES	Y	Y	N	D BLOCK AND F BLOCK UTILISED AS NOT ENOUGH SPACE IN A OR C BLOCKS
15	16/01/2024	QUBE	BALTIMORE HIGHWAY	147	EVENING	106	N	B Block, C Block, D Block, F Block, H Block, M block and P Shed	Y	Y	N	C BLOCK AND A BLOCK UTILISED AS NOT ENOUGH SPACE IN B, D, F, H BLOCKS
16	16/01/2024	QUBE	VIKING PASSAMA	V2378	EVENING	107	N	C BLOCK, Q BLOCK AND GSHED	Y	Y	N	
17	17/01/2024	QUBE	MIRACULOUS ACE	126	DAY	105	N	B BLOCK, DBLOCK, F BLOCK, H BLOCK AND GEAR STORE	Y	Y	N	VESSEL BERTHED AT 105 DUE TO 106 AND 107 BEING OCCUPIED.
18	18/01/2024	QUBE	MORNING CRYSTAL	V2379	EVENING	107	N	ESHED EAVES, A BLOCK, C BLOCK, O BLOCK, Q BLOCK AND ESHED	Y	Y	N	
19	19/01/2024	QUBE	XING ZHI HAI	1	DAY	103	N	DIRECT TO TRUCK	Y	Y	N	
20	19/01/2024	QUBE	MORNING COMPOSER	EE320	EVENING	107	N	GSHED EAVES, 107STRG, A BLOCK, B BLOCK, D BLOCK, F BLOCK, O BLOCK, Q BLOCK, E SHED AND K BLOCK	Y	Y	N	B BLOCK AND D BLOCK UTILISED AS NOT ENOUGH SPACE IN A OR C BLOCKS
21	20/01/2024	QUBE	RCC ANTWERP	1	EVENING	106	N	D BLOCK, F BLOCK AND H BLOCK	Y	Y	N	
22	21/01/2024	QUBE	SIFNOS	1	DAY	103	N	DIRECT TO TRUCK	Y	Y	N	
23	22/01/2024	LINX	ARTEMIS LEADER	122	NIGHT	107	N	ESHED EAVES, 107CON, A BLOCK, B BLOCK, C BLOCK, O BLOCK AND Q BLOCK	Y	Y	N	B BLOCK AND D BLOCK UTILISED AS NOT ENOUGH SPACE IN A OR C BLOCKS
24	22/01/2024	QUBE	RCC ASIA	14	EVENING	105	N	D BLOCK AND GEAR STORE	Y	Y	N	VESSEL BERTHED AT 105 DUE TO 106 AND 107 BEING OCCUPIED. H BLOCK NOT UTILISED AS FULL
25	23/01/2024	QUBE	PACIFIC ENDEAVOUR	2312	EVENING	106	N	L BLOCK AND P SHED	Y	Y	N	
26	25/01/2024	QUBE	TYSLA	N2302	DAY	106	N	F BLOCK, H BLOCK, M BLOCK AND GEAR STORE	Y	Y	N	
27	26/01/2024	LINX	HOEGH TRIGGER	48	DAY	107	N	ESHED EAVES, GSHED EAVES, 107CON, A BLOCK, C BLOCK, B BLOCK AND ESHED	Y	Y	N	B BLOCK UTILISED AS NOT ENOUGH SPACE IN A OR C BLOCKS
28	27/01/2024	QUBE	PAGANELLA	V2451	DAY	106	N	D BLOCK, F BLOCK, M BLOCK AND PSHED	Y	Y	N	H BLOCK NOT UTILISED AS FULL
29	29/01/2024	LINX	HOEGH LONDON	108	NIGHT	107	N	A BLOCK, C BLOCK, O BLOCK, Q BLOCK, E SHED EAVES AND ESHED	Y	Y	N	
30	30/01/2024	QUBE	AUSTRALIAN BULKER	2312	DAY	103	N	DIRECT TO TRUCK	Y	Y	N	

Legend - Berth # and Laydown

Primary
Secondary
Tertiary

	QUBE	LINX
TOTAL VESSELS FOR MONTH	24	6
GREEN BERTH	20	5
ORANGE BERTH	4	1
RED BERTH	0	0
GREEN LAYDOWN	16	3
ORANGE LAYDOWN	8	3
RED LAYDOWN	0	0

NUMBER OF BERTHING DELAYS	0	0	SEE ATTACHED SHEETS SHOWING BERTH AND CONGESTION DELAYS
NUMBER OF MACHINERY ISSUES/REQUESTS NOT MET			

VESSEL ETA'S										
NAME	ETA DATE	ETA TIME	POB	ETD	BERTH	BSD - TREATMENT	PREVIOUS PORT	VOLUME	WINDOW	
WALRUS ACE	29/12/2023	6:00	29/12/2023 4:57	3/01/2024 15:55	105			2599	YOK	REQUIRES FOGGING
GRAND AURORA	29/12/2023	16:00	29/12/2023 16:59	30/12/2023 22:54	107			2401	BNE	INSECTS FOUND ONBOARD IN BNE
SOUTHERN HIGHWAY	31/12/2023	11:50	31/12/2023 13:06	4/01/2023 16:32	107			1607	BNE	
DON JUAN	1/01/2024	7:24	3/01/2023 17:58	6/01/2024 3:29	105			1630	BNE	
AAL BANGKOK	1/01/2024	17:30	1/01/2024 18:54	4/01/2024 1:16	106				BNE	
GRAND QUEST	2/01/2024	5:00	4/01/2024 3:00	6/01/2024 14:26	106			1125	MEL	
CARMEN	3/01/2024	19:30	4/01/2024 19:00	9/01/2024 23:21	107			625	BNE	OPERATIONS CEASED AS BUG FOUND ONBOARD
XING ZHI HAI	5/01/2024	23:48	19/01/2024 4:29	20/01/2024 23:56	103					18,000T WHEAT
TRANS FUTURE 6	9/01/2024	3:00	9/01/2024 4:02	10/01/2024 16:04	106			2551	BNE	
GLORIOUS LEADER	9/01/2024	8:30	9/01/2024 9:37	10/01/2024 7:55	105			1023	YOK	
IGUAZU HIGHWAY	10/01/2024	11:30	10/01/2024 12:36	11/01/2024 2:58	107			620	MEL	
RCC TIANJIN	11/01/2024	16:00	11/01/2024 17:11	12/01/2024 4:57	107			1089	MAS	DIRECT CALL
SALVIA ISLAND	12/01/2024	20:00	13/01/2024 5:12	19/01/2024 2:21	103				LGB	35,000T WHEAT
BELUGA ACE	13/01/2024	8:30	13/01/2024 9:59	14/01/2024 6:59	107			1842	MEL	
SILVER QUEEN	13/01/2024	14:00	13/01/2024 13:58	14/01/2024 8:59	106			837	BNE	INSECTS FOUND IN BNE
NORD YILAN	14/01/2024	15:54	14/01/2024 17:11	16/01/2024 16:24	105				NCL	3,000T MAP
DREAM JASMINE	15/01/2024	6:00	15/01/2024 7:18	16/01/2024 19:34	107			1974	BNE	
BALTIMORE HIGHWAY	16/01/2024	11:00	16/01/2024 14:18	17/01/2024 16:04	106			2385	DRW	
VIKING PASSAMA	16/01/2024	17:00	16/01/2024 21:55	17/01/2024 18:24	107			662	BNE	
MIRACULOUS ACE	17/01/2024	7:00	17/01/2024 9:46	17/01/2024 9:46	105			1745	ADL	
MORNING CRYSTAL	18/01/2024	13:00	18/01/2024 14:57	19/01/2024 15:52	107			1421	BNE	
SIFNOS	18/01/2024	11:42	21/01/2024 10:35	28/01/2024 0:15	103					60,000T WHEAT
MORNING COMPOSER	19/01/2024	17:30	19/01/2024 18:33	20/01/2024 21:54	107			1524	MEL	INSECTS FOUND ONBOARD IN MEL - FUMIGATING IN APPLETON
RCC ANTWERP	20/01/2024	17:00	20/01/2024 17:08	23/01/2024 2:04	106			1245	BNE	
ARTEMIS LEADER	21/01/2024	21:00	22/01/2024 0:14	22/01/2024 14:12	105			2483	LCH	DIRECT CALL - ORIGINALLY 107 BUT CHANGED TO 105 DUE TO HIGH WINDS
ARTEMIS LEADER	21/01/2024	21:00	21/01/2024 14:12	25/01/2024 17:00	107			2483	LCH	DIRECT CALL - ORIGINALLY 107 BUT CHANGED TO 105 DUE TO HIGH WINDS
RCC ASIA	22/01/2024	18:00	22/01/2024 17:38	23/01/2024 4:25	105			345	BNE	
PACIFIC ENDEAVOUR	22/01/2024	23:30	23/01/2024 19:00	25/01/2024 6:30	106				MEL	
TYSLA	24/01/2024	12:00	25/01/2024 8:40	26/01/2024 5:01	106			367		
HOEGH TRIGGER	26/01/2024	8:00	26/01/2024 9:21	27/01/2024 23:06	107			1415	MEL	
AUSTRALIAN BULKER	27/01/2024	16:24	30/01/2024 5:13	6/02/2024 14:00	103				PLO	30,000T WHEAT
PAGANELLA	27/01/2024	9:00	27/01/2024 10:10	28/01/2024 2:55	106			1229		
HOEGH LONDON	29/01/2024	2:30	29/01/2024 3:48	30/01/2024 8:00	107			1593	MEL	

Port Kembla February 2024

NUMBER	DATE	STEVE-DORE	VESSEL	VOYAGE	STARTING SHIFT	BERTH #	BERTH DELAY	LAYDOWN	MACHINERY REQUEST RECEIVED	MACHINERY REQUEST FILLED	MACHINERY ISSUES	NOTES
1	2/02/2024	QUBE	WESTERN HIGHWAY	v160	DAY	107	N	ESHED EAVES, 107CON, C BLOCK, O BLOCK AND Q BLOCK	Y	Y	N	
2	3/02/2024	QUBE	TUNGIN	v2309	EVENING	106	N					
3	3/02/2024	LINX	JUPITER LEADER	v061	EVENING	107	N	GSHEDED EAVES, 107CON, A BLOCK, C BLOCK AND ESHED	Y	Y	N	
4	4/02/2024	QUBE	TRANS FUTURE 5	v151	DAY	105	N	D BLOCK, F BLOCK, H BLOCK, R BLOCK AND GEAR STORE	Y	Y	N	VESSEL BERTHED AT 105 DUE TO 106 AND 107 BEING OCCUPIED.
5	5/02/2024	QUBE	DOVER HIGHWAY	v105	DAY	107	N	107CON, A BLOCK, C BLOCK AND ESHED	Y	Y	N	
6	6/02/2024	QUBE	LAPIS ARROW	v022	NIGHT	105	N	B BLOCK AND D BLOCK	Y	Y	N	VESSEL BERTHED AT 105 DUE TO 106 AND 107 BEING OCCUPIED. H BLOCK NOT UTILISED AS FULL
7	6/02/2024	QUBE	AH BREMEN	v019	EVENING	103	N	DIRECT TO TRUCK	Y	Y	N	
8	7/02/2024	QUBE	ARC COMMITMENT	VEF323	NIGHT	107	N	ESHED EAVES, A BLOCK, C BLOCK, Q BLOCK AND ESHED	Y	Y	N	
9	8/02/2024	QUBE	GRAND VICTORY	v023	DAY	105	N	B BLOCK, D BLOCK, F BLOCK, R BLOCK, M BLOCK AND GEARSTORE	Y	Y	N	VESSEL BERTHED AT 105 DUE TO 106 AND 107 BEING OCCUPIED. H BLOCK NOT UTILISED AS FULL
10	9/02/2024	LINX	HOEGH ASIA	v170	NIGHT	107	N	ESHED EAVES, GSHEDED EAVES, 107CON, C BLOCK, Q BLOCK AND ESHED	Y	Y	N	
11	10/02/2024	LINX	HOEGH TARGET	v050	EVENING	107	N	107CON, I BLOCK, A BLOCK, C BLOCK AND ESHED	Y	Y	N	
12	11/02/2024	QUBE	AAL DALIAN	v24001	DAY	106	N	RAIL SIDING AND PSHEDED	Y	Y	N	
13	12/02/2024	QUBE	FW MERCURY	v24022	EVENING	105	N	DIRECT TO TRUCK	Y	Y	N	
14	13/02/2024	QUBE	THEMIS	VEE323	EVENING	107	N	107CON, I BLOCK, A BLOCK, C BLOCK, O BLOCK, Q BLOCK AND ESHED	Y	Y	N	
15	14/02/2024	LINX	HYPERION LEADER	v121	EVENING	107	N	ESHED EAVES, A BLOCK, C BLOCK, D BLOCK, Q BLOCK, Q BLOCK AND ESHED	Y	Y	N	D BLOCK UTILISED AS NOT ENOUGH SPACE IN A OR C BLOCKS
16	15/02/2024	QUBE	NAZENIN	v030	DAY	103	N	DIRECT TO TRUCK	Y	Y	N	
17	15/02/2024	LINX	RIGEL LEADER	v014	EVENING	106	N	D BLOCK, F BLOCK, H BLOCK, M BLOCK AND PSHEDED	Y	Y	N	
18	16/02/2024	LINX	GRAND DOLPHIN	v016	NIGHT	107	N	F BLOCK, H BLOCK, GSHEDED AND I BLOCK	Y	Y	N	F BLOCK AND H BLOCK UTILISED AS NOT ENOUGH SPACE IN A OR C BLOCKS
19	17/02/2024	QUBE	DON JUAN	V2452	EVENING	105	N	F BLOCK AND GEARSTORE	Y	Y	N	VESSEL BERTHED AT 105 DUE TO 106 AND 107 BEING OCCUPIED. H BLOCK NOT UTILISED AS FULL
20	18/02/2024	QUBE	RED COSMOS	v0224	NIGHT	103	N	DIRECT TO TRUCK	Y	Y	N	
21	19/02/2024	QUBE	WISDOM ACE	v084	NIGHT	105	N	B BLOCK, D BLOCK, H BLOCK AND GEARSTORE	Y	Y	N	VESSEL BERTHED AT 105 DUE TO 106 AND 107 BEING OCCUPIED.
22	19/02/2024	QUBE	TRANS FUTURE 7	v149	NIGHT	107	N	A BLOCK, B BLOCK, C BLOCK, D BLOCK, O BLOCK, Q BLOCK AND ESHED	Y	Y	N	B BLOCK AND D BLOCK UTILISED AS NOT ENOUGH SPACE IN A OR C BLOCKS
23	19/02/2024	QUBE	IRIS ACE	v081	DAY	106	N	GSHEDED EAVES, B BLOCK, F BLOCK, H BLOCK, I BLOCK, L BLOCK AND GEARSTORE	Y	Y	N	
24	20/02/2024	QUBE	SSI INTERCEPTOR	v0224	NIGHT	103	N	DIRECT TO TRUCK	Y	Y	N	
25	21/02/2024	LINX	APHRONITE LEADER	v042	NIGHT	107	N	A BLOCK, B BLOCK, C BLOCK, D BLOCK, O BLOCK AND Q BLOCK	Y	Y	N	B BLOCK AND D BLOCK UTILISED AS NOT ENOUGH SPACE IN A OR C BLOCKS
26	21/02/2024	QUBE	ORCA ACE	v045	EVENING	105	N	D BLOCK, F BLOCK AND H BLOCK	Y	Y	N	VESSEL BERTHED AT 105 DUE TO 106 AND 107 BEING OCCUPIED.
27	23/02/2024	QUBE	PACIFIC ENDEAVOUR	v2312	DAY	106	N	I BLOCK	Y	Y	N	
28	24/02/2024	LINX	CSAV RIO NEVADO	v24RND1	NIGHT	107	N	C BLOCK	Y	Y	N	
29	24/02/2024	QUBE	CLIPPER IRIS	v0224	DAY	103	N	DIRECT TO TRUCK	Y	Y	N	
30	25/02/2024	QUBE	LAKE FUJIAN	v001	NIGHT	105	N	D BLOCK, H BLOCK, R BLOCK AND GEARSTORE	Y	Y	N	VESSEL BERTHED AT 105 DUE TO 106 AND 107 BEING OCCUPIED.
31	26/02/2024	QUBE	THEBEN	VEE322	NIGHT	107	N	ESHED EAVES, 107CON, 107STRG, A BLOCK, C BLOCK, O BLOCK, Q BLOCK AND ESHED	Y	Y	N	
32	28/02/2024	QUBE	GLOVIS CARDINAL	v003	DAY	105	N	D BLOCK, F BLOCK, H BLOCK AND GEARSTORE	Y	Y	N	VESSEL BERTHED AT 105 DUE TO 106 AND 107 BEING OCCUPIED.
33	28/02/2024	LINX	HOEGH BERLIN	v124	DAY	107	N	107CON, A BLOCK, C BLOCK, D BLOCK, Q BLOCK AND ESHED	Y	Y	N	
34	28/02/2024	QUBE	AAL DAMPIER	v24002	EVENING	106	N	RAIL SIDING, PSHEDED AND L BLOCK	Y	Y	N	
35	29/02/2024	QUBE	IVORY ARROW	v154	NIGHT	107	N	107CON, ESHED EAVES, 107STRG, A BLOCK, C BLOCK, D BLOCK, O BLOCK, Q BLOCK AND ESHED	Y	Y	N	D BLOCK UTILISED AS NOT ENOUGH SPACE IN A OR C BLOCKS
36	29/02/2024	QUBE	CERTUS NARWHAL	v2401	DAY	103	N	DIRECT TO TRUCK	Y	Y	N	

Legend - Berth # and Laydown

	Primary
	Secondary
	Tertiary

	QUBE	LINX
TOTAL VESSELS FOR MONTH	27	9
GREEN BERTH	19	9
ORANGE BERTH	8	0
RED BERTH	0	0
GREEN LAYDOWN	22	6
ORANGE LAYDOWN	5	3
RED LAYDOWN	0	0

SEE ATTACHED SHEETS SHOWING BERTH AND CONGESTION DELAYS

NUMBER OF BERTHING DELAYS  
NUMBER OF MACHINERY ISSUES/REQUESTS NOT MET

0	0
---	---

VESSEL ETA'S										
NAME	ETA DATE	ETA TIME	POB	ETD	BERTH	BSD - TREATMENT	PREVIOUS PORT	VOLUME	WINDOW	
AM BREMEN	30/01/2024	3:15	6/02/2024 16:18	15/02/2024 4:17	103				USN	CLINKER
WESTERN HIGHWAY	2/02/2024	4:48	2/02/2024 5:56	3/02/2024 7:00	107			1471	LCH	DIRECT CALL - INSPECTION REQUIRED
LAPIS ARROW	2/02/2024	19:00	6/02/2024 4:03	8/02/2024 7:58	105			1906	KRN	DIRECT CALL - INSPECTION REQUIRED
JUPITER LEADER	3/02/2024	13:00	3/02/2024 14:13	3/02/2024 23:59	107			611	BNE	INSPECTION REQUIRED IN BNE - PASSED
TUNSIN	3/02/2024	20:00	3/02/2024 21:13	11/02/2024 0:57	106				BNE	CHINA STEEL
TRANS FUTURE 5	4/02/2024	7:00	4/02/2024 5:48	6/02/2024 1:56	107			2550	BNE	
DOVER HIGHWAY	5/02/2024	4:27	5/02/2024 5:48	7/02/2024 9:02				1487	LCH	DIRECT CALL
NAZENIN	5/02/2024	15:36	15/02/2024 6:11	17/02/2024 22:05	103				ADL	4,500T SODA ASH - DETAINED IN ADELAIDE BY AMSA
ARC COMMITMENT	5/02/2024	10:00	7/02/2024 11:21	8/02/2024 20:06	107			531	BNE	
GRAND VICTORY	7/02/2024	13:30	8/02/2024 9:55	9/02/2024 19:00	105			1773	BNE	
HOEGH ASIA	8/02/2024	15:00	8/02/2024 22:00	9/02/2024 20:50	107			900	MEL	
HOEGH TARGET	10/02/2024	15:00	10/02/2024 16:39	11/02/2024 19:33	107			797	MEL	
AAL DALIAN	10/02/2024	15:00	11/02/2024 2:48	12/02/2024 19:03	106				ADL	TRAINS
FW MERCURY	12/02/2024	13:48	12/02/2024 15:19	17/02/2024 11:58	105				NCL	IPL -MAP - 12,000T
THEMIS	13/02/2024	12:30	13/02/2024 13:58	14/02/2024 18:57	107			963	MEL	
RED COSMOS	13/02/2024	6:48	18/02/2024 0:21	20/02/2024 0:12	103				LPA	KOCH FERTILISER - 8,000T
HYPERION LEADER	14/02/2024	18:54	14/02/2024 21:01	15/02/2024 22:51	107			1414	BNE	
GRAND DOLPHIN	14/02/2024	10:12	16/02/2024 0:51	18/02/2024 13:59	107			926	BNE	
RIGEL LEADER	15/02/2024	10:00	15/02/2024 20:36	18/02/2024 16:41	106				BNE	LOAD T/S ONLY
DON JUAN	16/02/2024	12:00	17/02/2024 15:44	18/02/2024 18:06	105			1315	BNE	
WISDOM ACE	17/02/2024	5:00	18/02/2024 20:05	19/02/2024 21:58:0	105			1914	ADL	
TRANS FUTURE 7	18/02/2024	13:30	18/02/2024 16:17	21/02/2024 0:52	107			2048	BNE	
IRIS ACE	18/02/2024	17:00	19/02/2024 10:18	21/02/2024 15:59	106			1481	TWS	
SSI INTERCEPTOR	19/02/2023	12:24	20/02/2024 2:33	23/02/2024 5:57	103					KOCH FERTILISER - 12,000T
CLIPPER IRIS	20/02/2024	5:12	24/02/2024 8:33	29/02/2024 8:00	103					37,000T WHEAT
APHRODITE LEADER	20/02/2024	17:42	21/02/2024 2:56	24/02/2024 0:13	107			2552	BNE	
PACIFIC ENDEAVOUR	21/02/2024	0:15	23/02/2024 5:17	24/02/2024 22:49	106				MEL	
ORCA ACE	21/02/2024	12:00	21/02/2024 13:24	24/02/2024 17:01	105			1831	MEL	
CSAV RIO NEVADO	22/02/2024	18:30	24/02/2024 2:10	24/02/2024 19:32	107			473	ADL	
THEBEN	24/02/2024	22:00	26/02/2024 15:13	28/02/2024 1:06	107			1786	MEL	
LAKE FUXIAN	24/02/2024	22:00	24/02/2024 22:29	28/02/2024 6:53	105			967	BNE	
GLOVIS CARDINAL	25/02/2024	3:30	28/02/2024 9:02	1/03/2024 7:59	105			1476	NAN	DIRECT CALL
HOEGH BERLIN	25/02/2024	15:00	28/02/2024 3:18	29/02/2024 1:12	107			555	MEL	
IVORY ARROW	25/02/2024	16:00	29/02/2024 14:00	2/03/2024 13:56	107			1716	BNE	
SIERRA NEVADA HIGHWAY	26/02/2024	18:00	1/03/2024 15:03	3/03/2024 18:49	105			807	BNE	
AAL DAMPIER	28/02/2024	14:30	28/02/2024 16:19	10/03/2024 1:04	106					EXPORT STEEL + TRAINS+STEEL
CERTUS NARWHAL	29/02/2024	2:45	29/02/2024 10:32	5/03/2024 5:53	103					33,000T WHEAT

NUMBER	DATE	STEVE-DORE	VESSEL	VOYAGE	STARTING SHIFT	BERTH #	BERTH DELAY	LAYDOWN	MACHINERY REQUEST RECEIVED	MACHINERY REQUEST FILLED	MACHINERY ISSUES	NOTES
1	1/03/2024	QUBE	SIERRA NEVADA HIGHWAY	v166	EVENING	105	Y	D BLOCK, F BLOCK, H BLOCK AND GEARSTORE	Y	Y	N	VESSEL BERTHED AT 105 DUE TO 106 AND 107 BEING OCCUPIED.
2	2/03/2024	LINK	AAL DAMPIER	v24002	DAY	106	Y	LOAD CARGO	Y	Y	N	
3	2/03/2024	LINK	HOEGH TROTTER	v040	DAY	107	Y	ESHED EAVES, 107CON, A BLOCK, B BLOCK, ESHED AND GSHED	Y	Y	N	B BLOCK UTILISED AS NOT ENOUGH SPACE IN A OR C BLOCKS
4	3/03/2024	QUBE	FUITRANS WORLD	v325	EVENING	105	N	LOAD ONLY	Y	Y	N	
5	4/03/2024	QUBE	DREAM JASMINE	v032	NIGHT	107	Y	A BLOCK, B BLOCK, D BLOCK AND ESHED	Y	Y	N	B BLOCK AND D BLOCK UTILISED AS NOT ENOUGH SPACE IN A OR C BLOCKS
6	4/03/2024	QUBE	SOUTHERN HIGHWAY	v125	EVENING	105	Y	B BLOCK, D BLOCK, F BLOCK, H BLOCK, R BLOCK AND GEAR STORE	Y	Y	N	VESSEL BERTHED AT 105 DUE TO 106 AND 107 BEING OCCUPIED.
7	5/03/2024	QUBE	ANIARA	v.NZ303	NIGHT	107	Y	ESHED EAVES, GSHED EAVES, 107CON, I BLOCK, C BLOCK, O BLOCK, Q BLOCK AND GSHED	Y	Y	N	
8	6/03/2024	QUBE	NOBLE ACE	v099	NIGHT	105	Y	D BLOCK, F BLOCK, H BLOCK AND PSHEd	Y	Y	N	VESSEL BERTHED AT 105 DUE TO 106 AND 107 BEING OCCUPIED.
9	6/03/2024	QUBE	THALATTA	v.EE324	NIGHT	107	Y	ESHED EAVES, 107STRG, A BLOCK, C BLOCK, Q BLOCK AND GSHED	Y	Y	N	
10	6/03/2024	QUBE	SAKURA GLORY	v044	EVENING	103	N	DIRECT TO TRUCK	Y	Y	N	
11	7/03/2024	QUBE	LIBERTY ACE	v151A	DAY	105	Y	B BLOCK, D BLOCK, F BLOCK, H BLOCK, J BLOCK, K BLOCK AND GEARSTORE	Y	Y	N	VESSEL BERTHED AT 105 DUE TO 106 AND 107 BEING OCCUPIED.
12	8/03/2024	LINK	OCEANUS LEADER	v081	NIGHT	107	Y	A BLOCK, B BLOCK, C BLOCK, O BLOCK AND Q BLOCK	Y	Y	N	B BLOCK UTILISED AS NOT ENOUGH SPACE IN A OR C BLOCKS
13	9/03/2024	QUBE	VIKING PASSAMA	v2453	NIGHT	105	Y	B BLOCK, D BLOCK, R BLOCK, P SHED AND GEARSTORE	Y	Y	N	VESSEL BERTHED AT 105 DUE TO 106 AND 107 BEING OCCUPIED. H BLOCK NOT UTILISED AS FULL
14	10/03/2024	LINK	SPICA LEADER	v061	EVENING	106	Y	D BLOCK, F BLOCK, H BLOCK, K BLOCK, M BLOCK AND PSHEd	Y	Y	N	
15	11/03/2024	QUBE	OBERON	v.EF324	EVENING	107	Y	107CON, C BLOCK, Q BLOCK AND GSHED	Y	Y	N	
16	12/03/2024	QUBE	RCC ASIA	v015	NIGHT	106	Y	B BLOCK, C BLOCK, D BLOCK, F BLOCK, H BLOCK, L BLOCK AND PSHEd	Y	Y	N	C BLOCK UTILISED AS NOT ENOUGH SPACE IN B,D,F OR H BLOCKS
17	12/03/2024	QUBE	VIKING CORAL	v052	DAY	105	Y	D BLOCK, F BLOCK AND GEARSTORE	Y	Y	N	VESSEL BERTHED AT 105 DUE TO 106 AND 107 BEING OCCUPIED. H BLOCK NOT UTILISED AS FULL
18	13/03/2024	QUBE	ANDROMEDA SPIRIT	v164	DAY	106	Y	B BLOCK, D BLOCK, F BLOCK, H BLOCK, K BLOCK, M BLOCK AND GEARSTORE	Y	Y	N	
19	15/03/2024	QUBE	TONSBERG	v.EE401	NIGHT	107	N	ESHED EAVES, GSHED EAVES, 107STRG, A BLOCK, C BLOCK, O BLOCK, Q BLOCK, ESHED AND I BLOCK	Y	Y	N	
20	16/03/2024	QUBE	HORIZON RAY	v001	DAY	106	N	B BLOCK, C BLOCK, D BLOCK, F BLOCK, H BLOCK, R BLOCK AND L BLOCK	Y	Y	N	C BLOCK UTILISED AS NOT ENOUGH SPACE IN B,D,F OR H BLOCKS
21	16/03/2024	QUBE	TRANS FUTURE 6	v149	EVENING	107	N	A BLOCK, C BLOCK, Q BLOCK, O BLOCK, 107CON AND ESHED	Y	Y	N	
22	18/03/2024	LINK	LORD VISHNU	v065	DAY	105	N	F BLOCK AND H BLOCK	Y	Y	N	VESSEL BERTHED AT 105 DUE TO 106 AND 107 BEING OCCUPIED.
23	18/03/2024	LINK	HOEGH TRAPPER	v044	DAY	106	N	D BLOCK, F BLOCK, H BLOCK, ESHED, I BLOCK, L BLOCK, M BLOCK AND PSHEd	Y	Y	N	
24	18/03/2024	QUBE	NORD AURORA	v0342	EVENING	103	N	DIRECT TO TRUCK	Y	Y	N	
25	20/03/2024	LINK	HELIOS LEADER	v088	EVENING	106	N	D BLOCK, F BLOCK, H BLOCK, K BLOCK, J BLOCK, L BLOCK, M BLOCK AND PSHEd	Y	Y	N	
26	21/03/2024	QUBE	GRAND VICTORY	v024	DAY	107	N	GSHED EAVES, 107CON, A BLOCK, B BLOCK, C BLOCK, O BLOCK, Q BLOCK AND GSHED	Y	Y	N	B BLOCK UTILISED AS NOT ENOUGH SPACE IN A OR C BLOCKS
27	24/03/2024	LINK	GRAND QUEST	v.24GQ02	DAY	106	N	B BLOCK, D BLOCK, F BLOCK, H BLOCK AND R BLOCK	Y	Y	N	
28	24/03/2024	QUBE	MORNING LISA	v.EF401	DAY	107	N	ESHED EAVES, GSHED EAVES, C BLOCK, Q BLOCK AND ESHED	Y	Y	N	
29	24/03/2024	QUBE	LOYALTY HONG	v0324	EVENING	103	N	DIRECT TO TRUCK	Y	Y	N	
30	25/03/2024	LINK	CASSIOPEIA LEADER	v048	EVENING	105	N	B BLOCK, D BLOCK, F BLOCK AND GEARSTORE	Y	Y	N	VESSEL BERTHED AT 105 DUE TO 106 AND 107 BEING OCCUPIED. H BLOCK NOT UTILISED AS FULL
31	26/03/2024	QUBE	PACIFIC ENDEAVOUR	v2402	DAY	106	N	L BLOCK	Y	Y	N	
32	27/03/2024	QUBE	ORCA ACE	v046	DAY	107	N	C BLOCK, Q BLOCK, O BLOCK AND ESHED	Y	Y	N	
33	30/03/2024	LINK	ARTEMIS LEADER	v123	NIGHT	107	N	ESHED EAVES, C BLOCK, O BLOCK, Q BLOCK AND LOT 13	Y	Y	N	
34	30/03/2024	QUBE	TORREADOR	vEE402	EVENING	106	N	F BLOCK, H BLOCK, ESHED, I BLOCK, M BLOCK AND PSHEd	Y	Y	N	
35	31/03/2024	QUBE	REMY ENTERPRISE	v005	NIGHT	103	N	DIRECT TO TRUCK	Y	Y	N	
36	31/03/2024	QUBE	DON JUAN	v2455	DAY	105	N	F BLOCK, M BLOCK, PSHEd AND GEARSTORE	Y	Y	N	VESSEL BERTHED AT 105 DUE TO 106 AND 107 BEING OCCUPIED. H BLOCK NOT UTILISED AS FULL
37	31/03/2024	LINK	HOEGH TOKYO	v111	EVENING	107	N	A BLOCK, C BLOCK AND Q BLOCK	Y	Y	N	

Legend - Berth # and Laydown

Primary
Secondary
Tertiary

	QUBE	LINK
TOTAL VESSELS FOR MONTH	26	11
GREEN BERTH	19	9
ORANGE BERTH	7	2
RED BERTH	0	0
GREEN LAYDOWN	18	8
ORANGE LAYDOWN	8	3
RED LAYDOWN	0	0

NUMBER OF BERTHING DELAYS 0 0 SEE ATTACHED SHEETS SHOWING BERTH AND CONGESTION DELAYS

NUMBER OF MACHINERY ISSUES/REQUESTS NOT MET

VESSEL ETA'S										
NAME	ETA DATE	ETA TIME	POB	ETD	BERTH	BSD - TREATMENT	PREVIOUS PORT	VOLUME	WINDOW	
IVORY ARROW	25/02/2024	16:00	29/02/2024 14:00	2/03/2024 13:56	107			1716	BNE	
SIERRA NEVADA HIGHWAY	26/02/2024	18:00	1/03/2024 15:03	3/03/2024 18:49	105			807	BNE	
AAL DAMPIER	28/02/2024	14:30	28/02/2024 16:19	10/03/2024 1:04	106					EXPORT STEEL + TRAINS+STEEL
CERTUS NARWHAL	29/02/2024	2:45	29/02/2024 10:32	5/03/2024 5:53	103					33,000T WHEAT
HOEGH TROTTER	1/03/2024	11:00	2/03/2024 16:58	3/03/2024 22:10	107			680	MEL	
DREAM JASMINE	2/03/2024	4:00	4/03/2024 0:06	5/03/2024 2:53	107			1463	BNE	
FUJITRANS WORLD	2/03/2024	19:30	3/03/2024 21:28	4/03/2024 13:59	105			0	AKL	LOAD ONLY - DIRECT CALL
SOUTHERN HIGHWAY	3/03/2024	7:00	4/03/2024 16:07	5/03/2024 22:54	105			1219	BNE	
ANIARA	4/03/2024	16:00	5/03/2024 5:05	6/02/2024 4:48	107			438	BNE	
NOBLE ACE	5/03/2024	8:00	6/03/2024 1:00	7/03/2024 8:08	105			1517	ADL	
ANDROMEDA SPIRIT	5/03/2024	12:00	13/03/2024 3:48	15/03/2024 22:04	106			1598	YOK	DIRECT CALL - FOGGING REQUIRED
THALATTA	5/03/2024	23:00	6/03/2024 6:46	7/03/2024 20:03	107			945		
LIBERTY ACE	6/03/2024	6:00	7/03/2024 9:56	9/03/2024 1:59	105			1535	ADL	
SAKURA GLORY	6/03/2024	21:48	6/03/2024 23:20	18/03/2024 20:12	103					CLINKER
OCEANUS LEADER	7/03/2024	21:00	7/03/2024 22:30	9/03/2024 21:54	107			1667	BNE	
VIKING PASSAMA	9/03/2024	2:48	9/03/2024 3:54	12/03/2024 2:27	105			794		
SPICA LEADER	10/03/2024	1:18	10/03/2024 21:54	11/03/2024 23:57	106			508	MEL	
RCC ASIA	11/03/2024	3:18	12/03/2024 1:58	13/03/2024 1:56	106			1401	SNG	DIRECT CALL
OBERON	11/03/2024	14:00	11/03/2024 15:27	15/03/2024 0:01	107			839		DECK 10-11 REQUIRE FOGGING - FOUND OUT WHILST VESSEL WAS ALONGSIDE
VIKING CORAL	11/03/2024	21:00	12/03/2024 10:02	13/03/2024 13:58	105			282		
LOYALTY HONG	12/03/2024	2:30	25/03/2024 22:36	30/03/2024 7:03	103					21,000T WHEAT
TONSBERG	12/03/2024	14:00	15/03/2024 3:03	16/03/2024 7:56	107			597		
NORD AURORA	15/03/2024	6:24	18/03/2024 22:39	25/03/2024 4:35	103					60,000T WHEAT
HORIZON RAY	16/03/2024	0:15	16/03/2024 1:19	17/03/2024 12:57	106			2434	BNE	
TRANS FUTURE 6	16/03/2024	17:30	16/03/2024 21:44	20/03/2024 20:41	107			2507		
LORD VISHNU (NYK)	18/03/2024	3:00	18/03/2024 5:45	18/03/2024 16:55	105			460	DRW	
HOEGH TRAPPER	18/03/2024	8:59	20/03/2024 16:00	20/03/2024 18:10	106			1208	MEL	
HELIOS LEADER	20/03/2024	18:00	20/03/2024 20:13	22/03/2024 15:58	106			2285	YOK	
GRAND VICTORY	21/03/2024	6:00	21/03/2024 7:13	22/03/2024 4:55	107			1253		
PACIFIC ENDEAVOUR	23/03/2024	17:30	26/03/2024 0:01	27/03/2024 15:46						WAITING AT ANCHORAGE FOR ALL EXPORT CARGO TO ARRIVE
GRAND QUEST	24/03/2024	8:00	24/03/2024 8:38	25/03/2024 5:54	106			997	MEL	
MORNING LISA	25/03/2024	3:00	25/03/2024 4:03	25/03/2024 18:39	107			216		
CASSIOPEIA LEADER	25/03/2024	15:00	25/03/2024 18:39	26/03/2024 6:23	105			449	BNE	
ORCA ACE	27/03/2024	6:00	27/03/2024 7:07	27/03/2024 4:05	107			1686		
ARTEMIS LEADER	29/03/2024	19:00	29/03/2024 20:15	31/03/2024 9:51	107			514	BNE	
DOVER HIGHWAY	30/03/2024	6:30	1/04/2024 9:14	3/04/2024 4:02	105			1252		
TREADOR	30/03/2024	16:30	30/03/2024 17:48	31/03/2024 12:47	106			1017		
REMY ENTERPRISE	30/03/2024	19:10	30/03/2024 20:37	1/04/2024 12:28	103					3,967T SODA ASH
HOEGH TOKYO	31/03/2024	9:00	31/03/2024 12:18	3/04/2024 13:02	107			1498		LAY UP TO FIX RAMP
DON JUAN	31/03/2024	11:30	31/03/2024 9:30	1/04/2024 2:30	105			713		

NUMBER	DATE	STEVE-DORE	VESSEL	VOYAGE	STARTING SHIFT	BERTH #	BERTH DELAY	LAYDOWN	MACHINERY REQUEST RECEIVED	MACHINERY REQUEST FILLED	MACHINERY ISSUES	NOTES
1	1/04/2024	QUBE	DOVER HIGHWAY	v106	DAY	105	N	D BLOCK	Y	Y	N	VESSEL BERTHED AT 105 DUE TO 106 AND 107 BEING OCCUPIED. H BLOCK NOT UTILISED AS NOT ENOUGH SPACE
2	1/04/2024	QUBE	TURANDOT	v2403	DAY	106	N	B BLOCK AND PSHEd	Y	Y	N	H BLOCK NOT UTILISED AS NOT ENOUGH SPACE
3	4/04/2024	QUBE	TRANS FUTURE 5	v152	DAY	107	N	107CON,A BLOCK,C BLOCK,O BLOCK, Q BLOCK AND ESHED	Y	Y	N	
4	4/04/2024	QUBE	INCE ILGAZ	v002	EVENING	103	N	DIRECT TO TRUCK	Y	Y	N	
5	6/04/2024	QUBE	GLOVIS COUNTESS	v034	NIGHT	105	N	F BLOCK,H BLOCK AND GEAR STORE	Y	Y	N	VESSEL BERTHED AT 105 DUE TO 106 AND 107 BEING OCCUPIED.
6	6/04/2024	QUBE	TATUNG	v2401	EVENING	106	N	I BLOCK, K BLOCK, L BLOCK, M BLOCK, N BLOCK, GSHED AND PSHEd	Y	Y	N	
7	7/04/2024	QUBE	GENIUS HIGHWAY	v071	DAY	105	N	D BLOCK,F BLOCK AND GEAR STORE	Y	Y	N	VESSEL BERTHED AT 105 DUE TO 106 AND 107 BEING OCCUPIED. H BLOCK NOT UTILISED AS NOT ENOUGH SPACE
8	7/04/2024	QUBE	WALRUS ACE	v043	DAY	107	N	107CON,A BLOCK, B BLOCK, C BLOCK, O BLOCK AND Q BLOCK	Y	Y	N	B BLOCK UTILISED AS NOT ENOUGH SPACE IN A OR C BLOCKS
9	8/04/2024	QUBE	AMBER ARROW	v149	DAY	107	N	107CON,B BLOCK,D BLOCK AND ESHED	Y	Y	N	B BLOCK AND D BLOCKS UTILISED AS NOT ENOUGH SPACE IN A OR C BLOCKS
10	9/04/2024	LINX	HOEGH SHANGHAI	v111	NIGHT	107	N	ESHED EAVES,A BLOCK,B BLOCK,C BLOCK,D BLOCK,O BLOCK,Q BLOCK AND ESHED	Y	Y	N	B BLOCK AND D BLOCKS UTILISED AS NOT ENOUGH SPACE IN A OR C BLOCKS
11	9/04/2024	LINX	KARIVUSHI LEADER	v071	DAY	105	N	B BLOCK,D BLOCK,F BLOCK AND H BLOCK	Y	Y	N	VESSEL BERTHED AT 105 DUE TO 106 AND 107 BEING OCCUPIED.
12	10/04/2024	QUBE	BUNJUN ZEST	v24001	EVENING	103	N	DIRECT TO TRUCK	Y	Y	N	
13	11/04/2024	LINX	CENTAURUS LEADER	v049	EVENING	107	N	ESHED EAVES, 107CON,A BLOCK, C BLOCK, Q BLOCK AND ESHED	Y	Y	N	
14	12/04/2024	QUBE	VIKING PAGLIA	V2455	NIGHT	105	N	D BLOCK, F BLOCK,H BLOCK AND GEARSTORE	Y	Y	N	VESSEL BERTHED AT 105 DUE TO 106 AND 107 BEING OCCUPIED.
15	13/04/2024	QUBE	TRANS FUTURE 7	v150	EVENING	105	N	B BLOCK, F BLOCK, H BLOCK AND GEARSTORE	Y	Y	N	VESSEL BERTHED AT 105 DUE TO 106 AND 107 BEING OCCUPIED.
16	13/04/2024	LINX	CSAV RIO NEVADO	v24RN02	DAY	107	N	C BLOCK AND Q BLOCK	Y	Y	N	
17	13/04/2024	QUBE	ORCHID ACE	v138	EVENING	105	N	B BLOCK,D BLOCK,F BLOCK,H BLOCK, R BLOCK AND GEAR STORE	Y	Y	N	VESSEL BERTHED AT 105 DUE TO 106 AND 107 BEING OCCUPIED.
18	14/04/2024	LINX	APHRODITE LEADER	v044	NIGHT	107	N	107CON, C BLOCK AND O BLOCK	Y	Y	N	
19	14/04/2024	LINX	EMMA JANNEKE	v001	DAY	106	N	LOAD ONLY	Y	Y	N	
20	14/04/2024	QUBE	HSL CHICAGO	v24038	EVENING	103	N	DIRECT TO TRUCK	Y	Y	N	
21	16/04/2024	QUBE	FIDELIO	vEF402	NIGHT	107	N	ESHED EAVES, 107CON, GSHED EAVES,A BLOCK, C BLOCK, O BLOCK, Q BLOCK AND ESHED	Y	Y	N	
22	16/04/2024	QUBE	IVORY ARROW	v155	DAY	105	N	B BLOCK,D BLOCK, F BLOCK, H BLOCK AND GEAR STORE	Y	Y	N	VESSEL BERTHED AT 105 DUE TO 106 AND 107 BEING OCCUPIED.
23	17/04/2024	QUBE	NORD MELBOURNE	v023	NIGHT	107	N	RAIL SIDING	Y	Y	N	
24	17/04/2024	QUBE	VSC GASTOR	v002	DAY	103	N	DIRECT TO TRUCK	Y	Y	N	
25	18/04/2024	LINX	HOEGH JEDDAH	v061	DAY	107	N	ESHED EAVES,A BLOCK, C BLOCK, Q BLOCK, O BLOCK AND ESHED	Y	Y	N	
26	19/04/2024	QUBE	MORNING CRYSTAL	v2456	EVENING	105	N	B BLOCK,D BLOCK,F BLOCK, H BLOCK, R BLOCK AND GEAR STORE	Y	Y	N	VESSEL BERTHED AT 105 DUE TO 106 AND 107 BEING OCCUPIED.
27	19/04/2024	QUBE	GLOVIS CARDINAL	v004	EVENING	107	N	A BLOCK AND O BLOCK	Y	Y	N	
28	20/04/2024	QUBE	GRAND PACE	v034	DAY	107	N	A BLOCK	Y	Y	N	
29	21/04/2024	QUBE	GRAND AURORA	v005	NIGHT	105	N	D BLOCK, F BLOCK AND GEARSTORE	Y	Y	N	VESSEL BERTHED AT 105 DUE TO 106 AND 107 BEING OCCUPIED. H BLOCK NOT UTILISED AS NOT ENOUGH SPACE
30	21/04/2024	QUBE	CHINATANA NAREE	v24047	DAY	103	N	DIRECT TO TRUCK	Y	Y	N	
31	21/04/2024	QUBE	TONGALA	vEE403	EVENING	105	N	B BLOCK, D BLOCK, H BLOCK, ESHED, PSHEd AND GEARSTORE	Y	Y	N	VESSEL BERTHED AT 105 DUE TO 106 AND 107 BEING OCCUPIED.
32	21/04/2024	QUBE	TITANIA	vEF403	EVENING	107	N	C BLOCK AND ESHED	Y	Y	N	
33	23/04/2024	QUBE	ADRIA ACE	v139	NIGHT	107	N	107CON,C BLOCK,O BLOCK AND Q BLOCK	Y	Y	N	
34	23/04/2024	LINX	LORD VISHNU	v066	DAY	106	N	106STR, 107STRG, R BLOCK, H BLOCK, PSHEd AND M BLOCK	Y	Y	N	
35	24/04/2024	QUBE	GLOVIS CROWN	v001	DAY	107	N	A BLOCK,B BLOCK,C BLOCK AND O BLOCK	Y	Y	N	
36	24/04/2024	QUBE	BELUGA ACE	v052	EVENING	105	N	B BLOCK,D BLOCK, F BLOCK AND H BLOCK	Y	Y	N	VESSEL BERTHED AT 105 DUE TO 106 AND 107 BEING OCCUPIED.
37	26/04/2024	QUBE	TIANJIN HIGHWAY	v161	DAY	107	N	ESHED EAVES, 107CON,C BLOCK,O BLOCK, Q BLOCK AND ESHED	Y	Y	N	
38	26/04/2024	LINX	GRAND DOLPHIN	v017	EVENING	106	N	D BLOCK, F BLOCK, H BLOCK AND GEARSTORE	Y	Y	N	
39	29/04/2024	QUBE	PAGANELLA	v2457	DAY	106	N	B BLOCK, D BLOCK, F BLOCK, H BLOCK, M BLOCK AND PSHEd	Y	Y	N	
40	29/04/2024	QUBE	ANNAMARIA	v006	DAY	107	N	I BLOCK	Y	Y	N	
41	30/04/2024	QUBE	DARYA MAHI	v001	DAY	103	N	DIRECT TO TRUCK	Y	Y	N	
42	30/04/2024	QUBE	AAL BANGKOK	v24004	EVENING	106	N	L BLOCK, GSHED AND PSHEd	Y	Y	N	

**Legend - Berth # and Laydown**  
 Primary  
 Secondary  
 Tertiary

	QUBE	LINX
<b>TOTAL VESSELS FOR MONTH</b>	33	9
GREEN BERTH	21	8
ORANGE BERTH	12	1
RED BERTH	0	0
GREEN LAYDOWN	27	8
ORANGE LAYDOWN	6	1
RED LAYDOWN	0	0

**NUMBER OF BERTHING DELAYS** 0 0 **SEE ATTACHED SHEETS SHOWING BERTH AND CONGESTION DELAYS**  
**NUMBER OF MACHINERY ISSUES/REQUESTS NOT MET**



VESSEL ETA'S										
NAME	ETA DATE	ETA TIME	POB	ETD	BERTH	BSD - TREATMENT	PREVIOUS PORT	VOLUME	WINDOW	
DOVER HIGHWAY	30/03/2024	6:30	1/04/2024 9:14	3/04/2024 4:02	105			1252		
REMY ENTERPRISE	30/03/2024	19:10	30/03/2024 20:37	1/04/2024 12:28	103					3,967T SODA ASH
HOEGH TOKYO	31/03/2024	9:00	31/03/2024 12:18	3/04/2024 13:02	107			1498		LAY UP TO FIX RAMP
DON JUAN	31/03/2024	11:30	31/03/2024 9:30	1/04/2024 2:30	105			713		
TURANDOT	31/03/2024	22:00	1/04/2024 2:11	2/04/2024 21:54	106			929		
BUNUN ZEST	4/04/2024	6:00	10/04/2024 13:08	13/04/2024 13:13	103					10,000T SSP
TRANS FUTURE 5	4/04/2024	8:30	4/04/2024 9:18	5/04/2024 8:00				1591		
INCE ILGAZ	4/04/2024	14:00	4/04/2024 14:48	9/04/2024 23:05	103					50,000T WHEAT
GLOVIS COUNTESS	5/04/2024	16:00	5/04/2024 17:08	6/04/2024 20:03	105			1412	BNE	
TATUNG	6/04/2024	12:00	6/04/2024 13:20	13/04/2024 16:04	106					CHINA STEEL
EMMA JANNEKE	6/04/2024	14:00	14/04/2024 7:18	23/04/2024 23:07	106					EXPORT STEEL - BSL
WALRUS ACE	6/04/2024	17:00	7/04/2024 5:31	7/04/2024 21:47	107			1298	MEL	
GENIUS HIGHWAY	7/04/2024	9:00	7/04/2024 9:57	9/04/2024 5:03	105			1494		DIRECT CALL
AMBER ARROW	7/04/2024	11:30	8/04/2024 0:12	8/04/2024 18:06	107			505		
HOEGH SHANGHAI	7/04/2024	14:00	8/04/2024 20:43	10/04/2024 8:10	107			1145		
KARIYUSHI LEADER	8/04/2024	5:00	9/04/2024 8:30	11/04/2024 8:00	105			1480		
CENTAURUS LEADER	11/04/2024	14:00	11/04/2024 19:06	13/04/2024 2:58	107			979	BNE	
VIKING PAGLIA	11/04/2024	2:12	11/04/2024 20:44	12/04/2024 14:02	105			728	BNE	
CSAV RIO NEVADO	12/04/2024	2:12	13/04/2024 5:00	13/04/2024 19:10	107			669	MEL	
TRANS FUTURE 7	12/04/2024	17:00	12/04/2024 21:01	13/04/2024 21:28	105			1253	BNE	
APHRODITE LEADER	13/04/2024	6:30	13/04/2024 21:02	15/04/2024 14:56	107			677	SIN	DIRECT CALL - NIL INPSECTION REQUIRED
ORCHID ACE	13/04/2024	13:00	14/04/2024 9:15	16/04/2024 6:11	105			1324	ADL	
IVORY ARROW	13/04/2024	22:00	16/04/2024 7:00	19/04/2024 14:46	105			1753	SIN	DIRECT CALL - NIL INPSECTION REQUIRED
NORD MELBOURNE	14/04/2024	18:00	17/04/2024 1:58	17/04/2024 21:52	107					RAIL WAGONS
HSL CHICAGO	14/04/2024	20:57	14/04/2024 22:06	16/04/2024 14:55	103					9,000T MAP
FIDELIO	14/04/2024	13:00	15/04/2024 19:12	17/04/2024 0:01	107			602	BNE	
VSC CASTOR	16/04/2024	20:00	17/04/2024 11:52	21/04/2024 13:14	103					42,000T WHEAT
HOEGH JEDDAH	16/04/2024	15:00	17/04/2024 23:36	19/04/2024 9:12	107			1063		
MORNING CRYSTAL	17/04/2024	10:00	19/04/2024 16:23	20/04/2024 19:53	105			1322		
GLOVIS CARDINAL	18/04/2024	8:00	19/04/2024 11:07	19/04/2024 23:10	107					DIRECT CALL - NIL INPSECTION REQUIRED
GRAND PACE	18/04/2024	21:30	20/04/2024 3:17	21/04/2024 17:37	107			1316	MEL	
GRAND AURORA	20/04/2024	1:00	20/04/2024 22:02	21/04/2024 20:22	105			864		
CHINATANA NAREE	20/04/2024	18:00	21/04/2024 16:52	27/04/2024 23:01	103					12,000T UREA
ADRIA ACE	21/04/2024	4:00	22/04/2024 18:19	24/04/2024 2:42	107			885	POM	DIRECT CALL - INSPECTION REQUIRED
TITANIA	21/04/2024	5:00	21/04/2024 19:57	22/04/2024 16:00	107			293		
TONGALA	21/04/2024	21:06	21/04/2024 22:23	22/04/2024 23:10	105			544		
GLOVIS CROWN	23/04/2024	19:45	24/04/2024 4:23	26/04/2024 8:02	107			2583	BNE	
LORD VISHNU	24/04/2024	10:30	24/04/2024 11:46	25/04/2024 0:06	106			744		DIRECT CALL - NIL INSPECTION REQUIRED
BELUGA ACE	24/04/2024	21:30	24/04/2024 22:18	27/04/2024 0:28	105			1638		BUGS FOUND IN BNE
TIANJIN HIGHWAY	25/04/2024	20:00	26/04/2024 10:02	28/04/2024 0:20	107			1221		
GRAND DOLPHIN	26/04/2024	12:00	26/04/2024 13:10	28/04/2024 16:00	106			696		
ANNAMARIA	29/04/2024	8:00	29/04/2024 9:06	3/05/2024 11:14	107					STEEL
PAGANELLA	29/04/2024	4:00	29/04/2024 5:13	30/04/2024 3:13	106			973		
DARYA MAHI	30/04/2024	4:48	30/04/2024 6:21	3/05/2024 0:20	103					7,500T SODA ASH
AAL BANGKOK	30/04/2024	15:24	30/04/2024 16:23	2/05/2024 8:08	106					TBM

NUMBER	DATE	STEVE-DORE	VESSEL	VOYAGE	STARTING SHIFT	BERTH #	BERTH DELAY	LAYDOWN	MACHINERY REQUEST RECEIVED	MACHINERY REQUEST FILLED	MACHINERY ISSUES	NOTES
1	1/05/2024	QUBE	NEW CENTURY 1	187	DAY	105	N	B BLOCK, D BLOCK, F BLOCK AND H BLOCK	Y	Y	N	VESSEL BERTHED AT 105 DUE TO 106 AND 107 BEING OCCUPIED.
2	2/05/2024	LINX	GRAND QUEST	24GQA3	EVENING	106	N	D BLOCK AND F BLOCK	Y	Y	N	H BLOCK NOT UTILISED AS FULL
3	3/05/2024	QUBE	AFRICAN BAZA	001	EVENING	103	N	DIRECT TO TRUCK	Y	Y	N	
4	3/05/2024	LINX	PACIFIC WAVE	019	EVENING	107	N	LOAD ONLY	Y	Y	N	
5	4/05/2024	QUBE	PACIFIC ENDEAVOUR	2403W	DAY	105	N	GEARSTORE	Y	Y	N	
6	4/05/2024	QUBE	MORNING PROSPERITY	EE405	EVENING	106	N	B BLOCK, D BLOCK, F BLOCK, H BLOCK, ESHED, M BLOCK, L BLOCK AND PSHEd	Y	Y	N	
7	5/05/2024	LINX	PLUTO LEADER	051	EVENING	106	N	B BLOCK, C BLOCK, K BLOCK, L BLOCK AND PSHEd	Y	Y	N	C BLOCK UTILISED AS NOT ENOUGH SPACE IN B,D,F OR H BLOCKS
8	7/05/2024	QUBE	TURANDOT	V2458	EVENING	106	N	F BLOCK, H BLOCK, L BLOCK AND PSHEd	Y	Y	N	
9	9/05/2024	QUBE	RCC TIANJIN	011	EVENING	106	N	D BLOCK, F BLOCK AND H BLOCK	Y	Y	N	
10	10/05/2024	QUBE	TRANS FUTURE 6	150	DAY	105	N	B BLOCK, D BLOCK AND H BLOCK	Y	Y	N	VESSEL BERTHED AT 105 DUE TO 106 AND 107 BEING OCCUPIED.
11	10/05/2024	QUBE	TORRENS	NZ403	EVENING	106	N	B BLOCK, D BLOCK, L BLOCK AND PSHEd	Y	Y	N	H BLOCK NOT UTILISED AS FULL
12	13/05/2024	LINX	HOEGH ST. PETERSBURG	v087	DAY	106	N	B BLOCK, C BLOCK, ESHED, K BLOCK, M BLOCK AND PSHEd	Y	Y	N	C BLOCK UTILISED AS NOT ENOUGH SPACE IN B,D,F OR H BLOCKS
13	13/05/2024	QUBE	VIKING DIAMOND	v059	EVENING	105	N	B BLOCK, L BLOCK AND GEARSTORE	Y	Y	N	VESSEL BERTHED AT 105 DUE TO 106 AND 107 BEING OCCUPIED. H BLOCK NOT UTILISED AS NOT ENOUGH SPACE
14	14/05/2024	QUBE	GLOVIS STELLA	v001	EVENING	106	N	D BLOCK, F BLOCK AND H BLOCK	Y	Y	N	
15	15/05/2024	QUBE	LOWLANDS ISLAND	v001	DAY	103	N	DIRECT TO TRUCK	Y	Y	N	
16	15/05/2024	QUBE	AAL DAMPIER	v24004	DAY	105	N	N BLOCK	Y	Y	N	
17	15/05/2024	QUBE	DOVER HIGHWAY	v107	DAY	106	N	D BLOCK AND F BLOCK	Y	Y	N	
18	16/05/2024	QUBE	PORT ALBERNI	v001	DAY	103	N	DIRECT TO TRUCK	Y	Y	N	
19	16/05/2024	QUBE	SALVIA ACE	v156	EVENING	106	N	B BLOCK, D BLOCK, F BLOCK, H BLOCK, L BLOCK, M BLOCK AND PSHEd	Y	Y	N	
20	19/05/2024	LINX	HOEGH TRAVELLER	v044	DAY	107	N	ESHED EAVES, 107CON, C BLOCK, Q BLOCK AND ESHED	Y	Y	N	
21	19/05/2024	QUBE	GRAND RACE	v001	EVENING	106	N	B BLOCK, C BLOCK, D BLOCK, F BLOCK AND R BLOCK	Y	Y	N	C BLOCK UTILISED AS NOT ENOUGH SPACE IN B,D,F OR H BLOCKS. H BLOCK NOT UTILISED AS FULL
22	22/05/2024	LINX	HOEGH TRACER	v048	EVENING	107	N	ESHED EAVES, 107CON, GSHED EAVES, A BLOCK, C BLOCK, D BLOCK, O BLOCK AND ESHED	Y	Y	N	
23	23/05/2024	QUBE	GENIUS STAR XI	v5455001	DAY	105	N	GEARSTORE AND PSHEd	Y	Y	N	
24	23/05/2024	LINX	APHRODITE LEADER	v045	EVENING	106	N	F BLOCK, H BLOCK, M BLOCK AND PSHEd	Y	Y	N	
25	24/05/2024	QUBE	MARTORELL	v167	EVENING	107	N	107CON, 107STRG, A BLOCK, C BLOCK, D BLOCK, O BLOCK, Q BLOCK AND ESHED	Y	Y	N	
26	25/05/2024	QUBE	EAST GATE	v2405	DAY	103	N	DIRECT TO TRUCK	Y	Y	N	
27	25/05/2024	QUBE	TRANS FUTURE 5	v153	DAY	105	N	B BLOCK, D BLOCK AND H BLOCK	Y	Y	N	VESSEL BERTHED AT 105 DUE TO 106 AND 107 BEING OCCUPIED.
28	25/05/2024	LINX	CSAV RIO NEVADO	v24RN03	DAY	106	N	D BLOCK, F BLOCK, K BLOCK AND L BLOCK	Y	Y	N	H BLOCK NOT UTILISED AS FULL
29	25/05/2024	QUBE	MANON	vEE407	EVENING	107	N	ESHED EAVES, 107CON, A BLOCK, B BLOCK, C BLOCK, ESHED AND I BLOCK	Y	Y	N	B BLOCK UTILISED AS NOT ENOUGH SPACE IN C,A,Q OR O BLOCKS.
30	26/05/2024	LINX	PORT ALBERNI	v100-EXP	EVENING	105	N	DIRECT TO TRUCK	Y	Y	N	
31	27/05/2024	LINX	HARVEST LEADER	v079	NIGHT	107	N	B BLOCK, C BLOCK, O BLOCK AND D BLOCK	Y	Y	N	B AND D BLOCK UTILISED AS NOT ENOUGH SPACE IN C,A,Q OR O BLOCKS.
32	28/05/2024	QUBE	PARSIFAL	vEE406	EVENING	107	Y	ESHED EAVES, 107CON, GSHED EAVES, B BLOCK, C BLOCK, D BLOCK, O BLOCK, Q BLOCK AND ESHED	Y	Y	N	B AND D BLOCK UTILISED AS NOT ENOUGH SPACE IN C,A,Q OR O BLOCKS.
33	29/05/2024	QUBE	GRAND PACE	v035	DAY	105	N	F BLOCK, H BLOCK AND R BLOCK	Y	Y	N	VESSEL BERTHED AT 105 DUE TO 106 AND 107 BEING OCCUPIED.
34	30/05/2024	QUBE	DREAM BEAUTY	v021	DAY	105	N	F BLOCK, H BLOCK, M BLOCK AND GEARSTORE	Y	Y	N	VESSEL BERTHED AT 105 DUE TO 106 AND 107 BEING OCCUPIED.
35	30/05/2024	QUBE	GENIUS HIGHWAY	v072	DAY	107	N	ESHED EAVES, A BLOCK, C BLOCK, D BLOCK AND O BLOCK	Y	Y	N	D BLOCK UTILISED AS NOT ENOUGH SPACE IN C,A,Q OR O BLOCKS.
36	31/05/2024	LINX	KARIYUSHI LEADER	v073	EVENING	105	N	F BLOCK, H BLOCK, R BLOCK AND GEARSTORE	Y	Y	N	VESSEL BERTHED AT 105 DUE TO 106 AND 107 BEING OCCUPIED.

Legend - Berth # and Laydown  
 Primary  
 Secondary  
 Tertiary

	QUBE	LINX
TOTAL VESSELS FOR MONTH	25	11
GREEN BERTH	19	10
ORANGE BERTH	6	1
RED BERTH	0	0
GREEN LAYDOWN	19	6
ORANGE LAYDOWN	6	5
RED LAYDOWN	0	0

NUMBER OF BERTHING DELAYS 1 0 SEE ATTACHED SHEETS SHOWING BERTH AND CONGESTION DELAYS  
 NUMBER OF MACHINERY ISSUES/REQUESTS NOT MET

VESSEL ETA'S									
NAME	ETA DATE	ETA TIME	POB	ETD	BERTH	BSD - TREATMENT	PREVIOUS PORT	VOLUME	WINDOW
NEW CENTURY 1	1/05/2024	9:30	1/05/2024 10:34	2/05/2024 6:55				1529	
PACIFIC ENDEAVOUR	1/05/2024	1:00	04/805/24 05:19	6/05/2024 17:58	105				
PACIFIC WAVE	1/05/2024	7:00	3/05/2024 15:06	17/05/2024 21:54	107				
AFRICAN BAZA	1/05/2024	23:54	3/05/2024 13:16	15/05/2024 10:36	103				
GRAND QUEST	2/05/2024	11:00	2/05/2024 11:42	3/05/2024 5:58	106			849	
MORNING PROSPERITY	4/05/2024	13:00	4/05/2024 13:54	5/05/2024 11:07	106			1428	
PLUTO LEADER	5/05/2024	17:18	5/05/2024 20:07	7/05/2024 3:50	106			1327	
TURANDOT	7/05/2024	18:30	7/02/2024 19:43	8/05/2024 12:01	106			953	
RCC TIANJIN	9/05/2024	18:00	9/05/2024 19:05	10/05/2024 17:45	106			1879	
TRANS FUTURE 6	10/05/2024	9:00	10/05/2024 10:39	11/05/2024 9:52	105			1658	
TORRENS	10/05/2024	16:00	10/05/2024 19:44	12/05/2024 0:19	106			668	
PORT ALBERNI	11/05/2024	0:18	16/05/2024 7:16	18/05/2024 9:04	103				
AAL DAMPIER	11/05/2024	14:55	14/05/2024 19:57	16/05/2024 4:43	105				BNE
HOEGH ST PETERSBURG	12/05/2024	5:00	14/05/2024 3:27	14/05/2024 15:58	106			1244	
GLOVIS STELLA	13/05/2024	10:00	14/05/2024 17:50	15/05/2024 7:45	106			973	
VIKING DIAMOND	13/05/2024	15:00	13/05/2024 16:35	14/05/2024 14:53	105			1139	
DOVER HIGHWAY	15/05/2024	2:00	15/05/2024 10:06	16/05/2024 20:49	106			1075	
LOWLANDS ISLAND	15/05/2024	5:00	15/05/2024 12:00	15/05/2024 13:12	103				
SALVIA ACE	16/05/2024	1:00	16/05/2024 20:49	17/05/2024 13:59	106	LOA 186/ BTB 29		1128	
GRAND RACE	18/05/2024	11:00	19/05/2024 12:56	20/05/2024 7:59	106	LOA 179/ BTB 50		1386	
HOEGH TRAVELLER	18/05/2024	19:00	19/05/2024 11:38	20/05/2024 12:57	107	LOA 200/ BTB 29 (HERO)		1412	
HOEGH TRACER	22/05/2024	12:00	22/05/2024 13:10	203/05/24 23:02	107	LOA 200/ BTB 29 (HERO)		2307	
GENIUS STAR XI	23/05/2024	5:00	23/05/2024 5:52	23/05/2024 15:54	105	LOA 125/ BTB 106			
APHRODITE LEADER	23/05/2024	11:30	23/05/2024 12:28	24/05/2024 16:59	106	LOA 200/ BTB 22		1671	
MARTORELL	24/05/2024	19:30	24/05/2024 20:45	25/08/2024 18:25	107	LOA 200/ BTB 32		1227	
CSAV RIO NEVADO	25/05/2024	4:00	25/05/2024 6:06	25/05/2024 23:51	106	LOA 183/ BTB 33		830	
TRANS FUTURE 5	25/05/2024	9:15	25/05/2024 10:20	26/05/2024 4:59	105	LOA 200/ BTB 17		1524	
EASTGATE	25/05/2024	18:00	25/05/2024 4:55	27/05/2024 3:33	103	LOA 177/ BTB 150			
MANON	25/05/2024	20:00	25/05/2024 20:43	26/05/2024 21:04	107	LOA 228/ BTB 42		976	
HARVEST LEADER	26/05/2024	16:48	27/05/2024 3:05	28/05/2024 19:03	107	LOA 200/ BTB 30		1352	BNE
PORT ALBERNI	26/05/2024	22:00	26/05/2024 23:16	9/06/2024 6:02	106	LOA 176/ BTB 148			
PARSIFAL	28/05/2024	10:00	28/05/2024 21:00	30/05/2024 0:26	107	LOA 265/ BTB 43 (107 ONLY)		919	
GRAND PACE	29/05/2024	3:53	29/05/2024 4:48	30/05/2024 2:26	105	LOA 179/ BTB 50		1414	
GENIUS HIGHWAY	29/05/2024	12:00	30/05/2024 4:43	30/05/2024 23:56	107	LOA 200/ BTB 27		1092	
DREAM BEAUTY	30/05/2024	7:00	30/05/2024 7:50	30/05/2024 22:46	105	LOA 186/ BTB 29		117	
KARIYUSHI LEADER	31/05/2024	20:30	31/05/2024 21:13	1/06/2024 23:54	105	LOA 180/ BTB 18		984	

TRANS TASMAN - NOT BERTHING UNTIL 05:00 04/05/24 - DUE TO AWAITING EXPORT CARGO  
EXPORT STEEL  
55,000T WHEAT - BERTH 03/05/24 BUT NOT WORK UNTIL 05/05/24

7,125T KOCH FERT  
DISCHARGE STEEL - 1800T

FIRST PORT CALL - NO INSPECTION REQUIRED  
BUG ISSUE IN BNE

1,680T KOCH Moving in front of the Port Alberni  
BUG ISSUE IN BNE  
DAFF ISSUE IN BNE  
MOL AGREED TO WAIT FOR BERTH 106

MACHINES/BBLK

DAFF ISSUE IN BNE

32,000T WHEAT

EXPORT STEEL  
DELAYED DUE TO LOA - REQUIRED 107

NUMBER	DATE	STEVE-DORE	VESSEL	VOYAGE	STARTING SHIFT	BERTH #	BERTH DELAY	LAYDOWN	MACHINERY REQUEST RECEIVED	MACHINERY REQUEST FILLED	MACHINERY ISSUES	NOTES
1	1/06/2024	QUBE	AAL HONG KONG	v24005	DAY	107	N	ESHED	Y	Y	N	
2	2/06/2024	QUBE	LYDDEN	v029	EVENING	105	N	B BLOCK, C BLOCK, F BLOCK, H BLOCK AND GEARSTORE	Y	Y	N	VESSEL BERTHED AT 105 DUE TO 106 AND 107 BEING OCCUPIED. C BLOCK UTILISED AS NOT ENOUGH SPACE IN B, D, F OR H BLOCKS
3	3/06/2024	LINX	PORT ALBERNI	v001	NIGHT	106	N	LOAD ONLY	Y	Y	N	
4	3/06/2024	QUBE	ARC HONOR	vEF405	DAY	107	N	C BLOCK, O BLOCK AND Q BLOCK	Y	Y	N	
5	4/06/2024	LINX	VIKING PASSERO	v041	EVENING	105	N	F BLOCK, R BLOCK, K BLOCK, M BLOCK AND PSHED	Y	Y	N	VESSEL BERTHED AT 105 DUE TO 106 AND 107 BEING OCCUPIED. H BLOCK NOT UTILISED AS FULL
6	4/06/2024	QUBE	SALOME	vEE409	EVENING	107	N	107STRG, GSHED AND C BLOCK	Y	Y	N	
7	6/06/2024	LINX	HOEGH TRIGGER	v173	DAY	105	N	R BLOCK, H BLOCK, ESHED AND GEARSTORE	Y	Y	N	VESSEL BERTHED AT 105 DUE TO 106 AND 107 BEING OCCUPIED.
8	7/06/2024	QUBE	TRANS FUTURE 7	v151	NIGHT	107	N	C BLOCK, O BLOCK AND Q BLOCK	Y	Y	N	
9	7/06/2024	QUBE	SANTA VALENTINA	v0624	DAY	103	N	DIRECT TO TRUCK	Y	Y	N	
10	8/06/2024	QUBE	GLOVIS CROWN	v002	EVENING	107	N	107STRG, ESHED, D BLOCK AND F BLOCK	Y	Y	N	F AND D BLOCK UTILISED AS NOT ENOUGH SPACE IN C, A, Q OR O BLOCKS.
11	9/06/2024	QUBE	PAGANELLA	V2460	DAY	105	N	F BLOCK, L BLOCK, M BLOCK AND PSHED	Y	Y	N	VESSEL BERTHED AT 105 DUE TO 106 AND 107 BEING OCCUPIED. H BLOCK NOT UTILISED AS FULL
12	9/06/2024	QUBE	PLATINIUM RAY	v001	EVENING	107	N	A BLOCK AND D BLOCK	Y	Y	N	D BLOCK UTILISED AS NOT ENOUGH SPACE IN C, A, Q OR O BLOCKS.
13	10/06/2024	QUBE	MORNING CRYSTAL	V2459	EVENING	106	N	B BLOCK, D BLOCK, M BLOCK AND PSHED	Y	Y	N	H BLOCK NOT UTILISED AS FULL
14	11/06/2024	LINX	GRAND QUEST	vQR24A3	NIGHT	107	N	C BLOCK	Y	Y	N	
15	11/06/2024	QUBE	PROMETHUS	v103	DAY	103	N	DIRECT TO TRUCK	Y	Y	N	
16	11/06/2024	QUBE	SWIFT ACE	v132	EVENING	105	N	D BLOCK, F BLOCK, L BLOCK AND M BLOCK	Y	Y	N	VESSEL BERTHED AT 105 DUE TO 106 AND 107 BEING OCCUPIED. H BLOCK NOT UTILISED AS FULL
17	12/06/2024	QUBE	AAL HONG KONG	v24005A	DAY	107	N	ESHED	Y	Y	N	
18	14/06/2024	QUBE	JASPER ARROW	v132	NIGHT	106	N	F BLOCK, H BLOCK, L BLOCK, M BLOCK, PSHED AND GEARSTORE	Y	Y	N	
19	15/06/2024	QUBE	TORONTO	vEE408	DAY	105	N	D BLOCK, F BLOCK, H BLOCK AND M BLOCK	Y	Y	N	VESSEL BERTHED AT 105 DUE TO 106 AND 107 BEING OCCUPIED.
20	15/06/2024	QUBE	TJUICA	vEF406	DAY	107	N	ESHED EAVES, 107STRG, Q BLOCK AND GSHED	Y	Y	N	
21	16/06/2024	QUBE	ORION HIGHWAY	v084	DAY	106	N	B BLOCK, D BLOCK AND M BLOCK	Y	Y	N	H BLOCK NOT UTILISED AS FULL
22	17/06/2024	LINX	HOEGH TRADER	v173	DAY	107	N	A BLOCK, C BLOCK, Q BLOCK, I BLOCK AND GSHED	Y	Y	N	
23	19/06/2024	QUBE	TURANDOT	V2461	DAY	106	N	F BLOCK, H BLOCK, K BLOCK, L BLOCK AND PSHED	Y	Y	N	
24	19/06/2024	QUBE	IRIS K	v24071	EVENING	105	N	DIRECT TO TRUCK	Y	Y	N	
25	20/06/2024	QUBE	SALVIA ACE	v157	NIGHT	107	N	107STRG, O BLOCK, Q BLOCK AND ESHED	Y	Y	N	
26	20/06/2024	LINX	GREEN BAY	v122	DAY	106	N	D BLOCK, F BLOCK, H BLOCK, M BLOCK AND PSHED	Y	Y	N	
27	21/06/2024	QUBE	VIOLET ACE	v111	EVENING	107	N	C BLOCK	Y	Y	N	
28	22/06/2024	LINX	RHEA LEADER	v124	DAY	106	N	B BLOCK, D BLOCK, F BLOCK, H BLOCK AND L BLOCK	Y	Y	N	
29	23/06/2024	QUBE	SANTA VALENTINA	v0624A	EVENING	103	N	DIRECT TO TRUCK	Y	Y	N	
30	23/06/2024	QUBE	NEW CENTURY 1	v188	DAY	107	N	A BLOCK, C BLOCK AND Q BLOCK	Y	Y	N	
31	24/06/2024	QUBE	VIKING DIAMOND	v060	NIGHT	106	N	K BLOCK AND L BLOCK	Y	Y	N	
32	24/06/2024	QUBE	VENUS SPIRIT	v077	DAY	105	N	F BLOCK, H BLOCK AND GEARSTORE	Y	Y	N	VESSEL BERTHED AT 105 DUE TO 106 AND 107 BEING OCCUPIED.
33	24/06/2024	LINX	HOEGH TARGET	v052	EVENING	107	N	ESHED EAVES1, 107CON, GSHED EAVES, A BLOCK, B BLOCK, C BLOCK, O BLOCK AND ESHED	Y	Y	N	B BLOCK UTILISED AS NOT ENOUGH SPACE IN C, A, Q OR O BLOCKS.
34	26/06/2024	LINX	JUPITER LEADER	v063	EVENING	106	N	D BLOCK, F BLOCK, H BLOCK, M BLOCK AND PSHED	Y	Y	N	
35	26/06/2024	QUBE	WALRUS ACE	v045	EVENING	107	N	ESHED EAVES, A BLOCK, C BLOCK, Q BLOCK AND ESHED	Y	Y	N	
36	28/06/2024	LINX	POSITIVE LEADER	v122	NIGHT	107	N	A BLOCK, C BLOCK AND Q BLOCK	Y	Y	N	
37	28/06/2024	QUBE	DOVER HIGHWAY	v108	DAY	106	N	D BLOCK, F BLOCK, H BLOCK, M BLOCK	Y	Y	N	
38	28/06/2024	QUBE	ADRIA ACE	v140	EVENING	105	N	D BLOCK, F BLOCK, R BLOCK AND GEARSTORE	Y	Y	N	VESSEL BERTHED AT 105 DUE TO 106 AND 107 BEING OCCUPIED. H BLOCK NOT UTILISED AS FULL
39	29/06/2024	QUBE	GOLDEN CENTURY	v2402	NIGHT	106	N	GSHED, L BLOCK, I BLOCK, M BLOCK AND K BLOCK	Y	Y	N	
40	29/06/2024	QUBE	MARSGRACHT	v2406	EVENING	105	N	DIRECT TO TRUCK	Y	Y	N	
41	30/06/2024	QUBE	VIGOR SW	v002	DAY	103	N	DIRECT TO TRUCK	Y	Y	N	
42	30/06/2024	QUBE	GLOVIS SAFETY	v001	DAY	107	N	ESHED EAVES, A BLOCK, B BLOCK AND C BLOCK	Y	Y	N	B BLOCK UTILISED AS NOT ENOUGH SPACE IN C, A, Q OR O BLOCKS.

Legend - Berth # and Laydown

	Primary
	Secondary
	Tertiary

TOTAL VESSELS FOR MONTH	QUBE	LINX
GREEN BERTH	26	8
ORANGE BERTH	6	2
RED BERTH	0	0
GREEN LAYDOWN	23	8
ORANGE LAYDOWN	8	2
RED LAYDOWN	1	0

NUMBER OF BERTHING DELAYS	0	0	SEE ATTACHED SHEETS SHOWING BERTH AND CONGESTION DELAYS
NUMBER OF MACHINERY ISSUES/REQUESTS NOT MET			

VESSEL ETA'S										
NAME	ETA DATE	ETA TIME	POB	ETD	BERTH	BSD - TREATMENT	PREVIOUS PORT	VOLUME	WINDOW	
KARIYUSHI LEADER	31/05/2024	20:30	31/05/2024 21:13	1/06/2024 23:54	105	LOA 180/ BTB 18		984		
AAL HONG KONG	1/06/2024	5:00	1/06/2024 6:16	4/06/2024 0:00	107	LOA 194/ BTB 180 (106 OR 107)				VACATE BERTH DUE TO DAFF ISSUE
LYDDEN	2/06/2024	17:00	2/06/2024 23:13	3/06/2024 19:51	105	LOA 200/ BTB 23		1499		
ARC HONOR	3/06/2024	9:00	3/06/2024 10:19	4/06/2024 6:05	107	LOA 230/ BTB 34		326		
SALOME	3/06/2024	5:00	4/06/2024 8:04	4/06/2024 22:54	107	LOA 265/ BTB 43		880		
VIKING PASSERO	4/06/2024	12:30	4/06/2024 13:32	5/06/2024 7:45	105	LOA 183/ BTB 32		880		
HOEGH TRIGGER	6/06/2024	6:00	6/06/2024 15:10	8/06/2024 15:10	105	LOA 200/ BTB 29 (HERO)	MEL	1062		
SANTA VALENTINA	6/06/2024	23:00	6/06/2024 23:45	11/06/2024 6:20	103					16,000T KOCH
TRANS FUTURE 7	6/06/2024	22:15	7/06/2024 8:20	8/06/2024 7:27	107	LOA 200/ BTB 17	BNE	1390		
PROMETHEUS	7/06/2024	22:30	11/06/2024 10:12	21/06/2024 0:11	103					CLINKER
PAGANELLA	9/06/2024	4:00	9/06/2024 12:03	9/06/2024 23:58	105		BNE	987		
GLOVIS CROWN	8/06/2024	11:45	8/06/2024 11:01	9/06/2024 15:05	107	LOA 200/ BTB 21	MEL	1748		
PLATINUM RAY	9/06/2024	18:35	9/06/2024 17:16	11/06/2024 1:27	107		BNE	1350		
GRAND QUEST	10/06/2024	12:00	11/06/2024 3:28	11/06/2024 16:09	107	LOA 180/ BTB 50		647		
MORNING CRYSTAL	10/06/2024	14:00	10/06/2024 12:28	11/06/2024 11:59	106	LOA 200/ BTB 24	BNE	1079		
SWIFT ACE	11/06/2024	15:00	11/06/2024 17:44	12/06/2024 17:45	106	LOA 200/ BTB 24	MEL	1179		
AAL HONG KONG	12/06/2024	10:00	12/06/2024 10:03	13/06/2024 0:01	107	LOA 194/ BTB 180 (106 OR 107)	MEL			DISCHARGE STEEL/BBLK AND LOAD 1 X RORO
JASPER ARROW	14/06/2024	0:30	14/06/2024 5:05	15/06/2024 6:15	106	LOA 200/ BTB 45	1ST CALL	1332		
TIJUCA	15/06/2024	3:00	15/06/2024 4:35	16/06/2024 12:39	107	LOA 232/ BTB 50	BNE	387		
TORONTO	15/06/2024		15/06/2024 8:15	16/06/2024 3:57	106	LOA 200/ BTB 41	MEL	774		
ORION HIGHWAY	16/06/2024	10:00	16/06/2024 9:05	17/06/2024 3:08	106	LOA 180/ BTB 29	BNE	1143		
HOEGH TRADER	17/06/2024	8:00	17/06/2024 9:35	19/06/2024 17:55	107	LOA 229/ BTB 44	MEL	960		DISCHARGE DELAYED DUE TO STERN RAMP ISSUES
TURANDOT	19/06/2024	11:00	19/06/2024 12:19	20/06/2024 7:04	106	LOA 199 / BTB 42	BNE	1223		
SALVIA ACE	19/06/2024	18:00	19/06/2024 19:54	20/06/2024 17:48	107	LOA 186 / BTB 29	BNE	935		
IRIS K	19/06/2024	19:54	19/06/2024 21:08	24/06/2024 4:28	105	LOA180/ BTB154				11,000T UREA
GREEN BAY	20/06/2024	8:54	20/06/2024 10:39	21/06/2024 11:00	106	LOA 200/ BTB 25	BNE	587		SAILING DELAYED DUE TO MAIN ENGINE ISSUE
VENUS SPIRIT	21/06/2024	5:15	24/06/2024 10:45	26/06/2024 1:54	105	LOA 183 / BTB 19	WLG	739		FIRST PORT OF CALL - REQUIRES TREATMENT AND REINSPECTION
VIOLET ACE	21/06/2024	14:30	21/06/2024 15:36	22/06/2024 11:00	107	LOA 189 / BTB 41	BNE	1432		
RHEA LEADER	22/06/2024	1:00	22/06/2024 2:42	24/06/2024 0:07	106	LOA 200 / BTB 21	DWN	1420		
SANTA VALENTINA	22/06/2024	10:48	23/06/2024 6:06	27/06/2024 8:51	103	LOA 200 / BTB 173	GEX			55,000T QUBE AGRI
NEW CENTURY 1	23/06/2024	6:00	23/06/2024 7:42	24/06/2024 4:28	107	LOA 200 / BTB 26	BNE	1790		
VIKING DIAMOND	23/06/2024	19:00	24/06/2024 2:41	24/06/2024 12:07	106	LOA 167 / BTB 22	BNE	23		
HOEGH TARGET	24/06/2024	14:30	24/06/2024 15:16	26/06/2024 5:56	107	LOA 200/ BTB 29 (HERO)	MEL	1696		
JUPITER LEADER	26/06/2024	14:15	26/06/2024 15:13	27/06/2024 7:51	106	LOA 183 / BTB 19	BNE	627		
WALRUS ACE	26/06/2024	15:00	26/06/2024 16:55	27/06/2024 14:01	107	LOA 200 / BTB 35	MEL	1283		
POSITIVE LEADER	27/06/2024	18:30	27/06/2024 20:49	28/06/2024 22:34	107	LOA 180 / BTB 20	BNE	1286		
DOVER HIGHWAY	28/06/2024	6:00	28/06/2024 7:09	28/06/2024 16:46	106	LOA 200 / BTB 24	BNE	736		
ADRIA ACE	28/06/2024	18:00	28/06/2024 19:00	29/06/2024 9:25	105	LOA 176 / BTB 27	MEL	1060		
GOLDEN CENTURY	28/06/2024	20:00	28/06/2024 22:11	10/07/2024 8:53	106	LOA 169 / BTB 144	BNE			CHINA STEEL
MARSGRACHT	29/06/2024	5:30	29/06/2024 11:18	1/07/2024 18:30	105	LOA 142 / BTB 129	PTL			PARRAMATTA POWER HOUSE
VIGOR SW	29/06/2024	18:30	30/06/2024 5:40	7/07/2024 0:08	103	LOA 177 / BTB 150	ADL			13,356T KOCH
GLOVIS SAFETY	30/06/2024	0:15	29/06/2024 23:16	1/07/2024 12:00	107	LOA 230 / BTB 14		1938		

Attachment A

## **KPI 6**

Allocation of first point of rest

Appleton Dock

Jun 26 – Jun 30, 2024

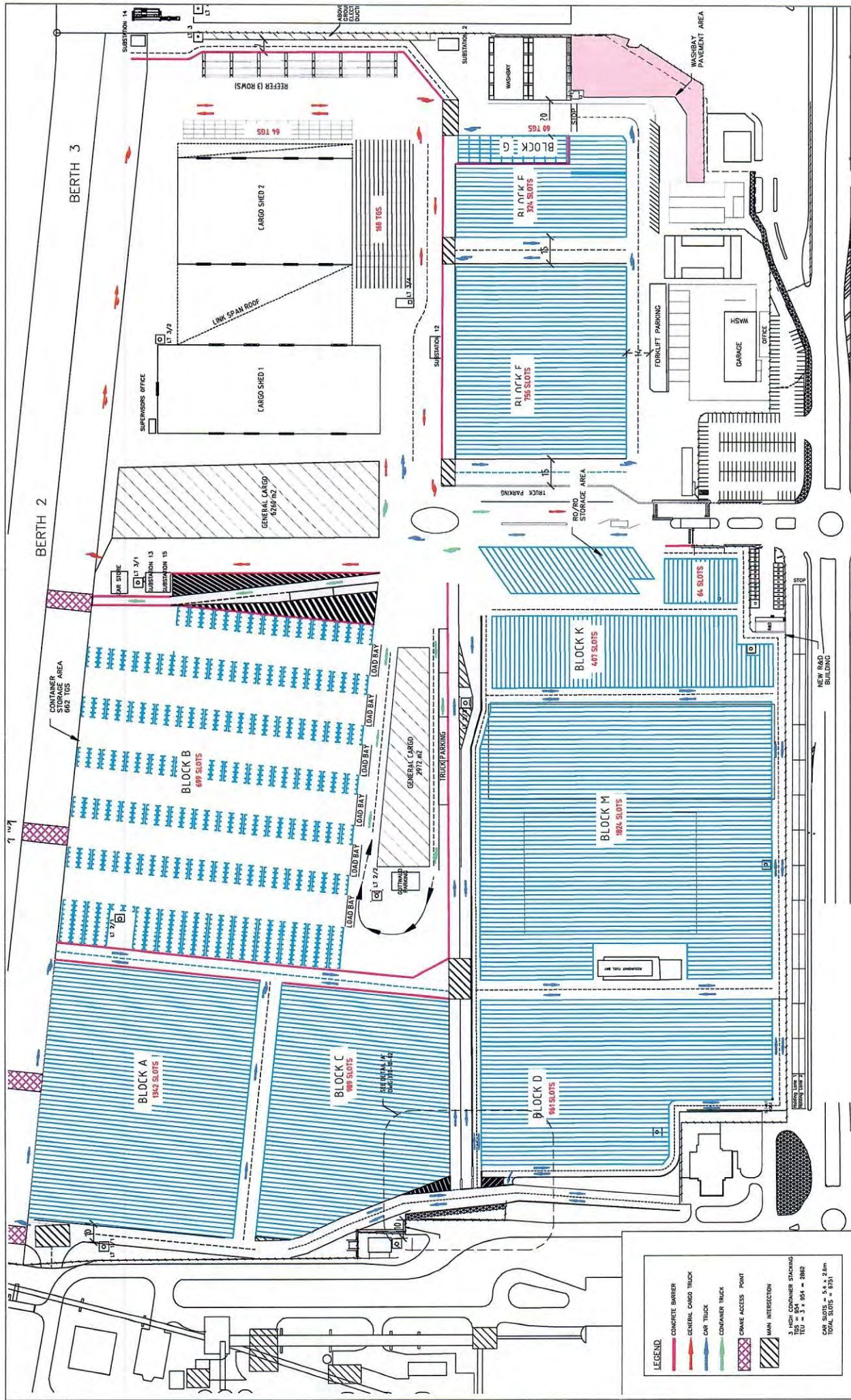
Appleton Dock Jun 2024

NUMBER	ETA	STEVEDORE	VESSEL	VOYAGE	STARTING SHIFT	BERTH #	BERTH DELAY	LAYDOWN	MACHINERY REQUEST RECEIVED	MACHINERY REQUEST FILLED	MACHINERY ISSUES	NOTES
1	27/06/2024	QUBE	GREAT PROFIT	v2402	DAY	E	N	E YARD, E SHED	N	N	N	13 BBLK UNITS DIRECT TO TRUCK. 300T OF STEEL CARGOES REBAR, PLATE, RODDING.

	QUBE	LINX
TOTAL VESSELS FOR MONTH	1	0
NUMBER OF BERTHING DELAYS	0	0
NUMBER OF MACHINERY ISSUES/REQUESTS NOT MET	0	0

**PART B – TERMINAL LAYOUT FISHERMAN ISLANDS AND PORT KEMBLA**





Project: **AAAT FISHERMAN ISLANDS TERMINAL**  
 Drawing Title: **C1 - LINEMARKING WORKS GENERAL ARRANGEMENT**  
 Drawing No: 270  
 Project No: 370-10-00  
 Rev: B

James Rose Consulting  
 A/N 64 175 064 811  
 Unit F21, 1-15 Barr Street  
 Brisbane QLD 4001  
 PH: 07 3255 6565  
 FAX: 07 3255 6569  
 msk@jamesrose.com.au  
 www.jamesrose.com.au

**AAAT**  
 Australian Amalgamated Terminals

Client: **AAAT**

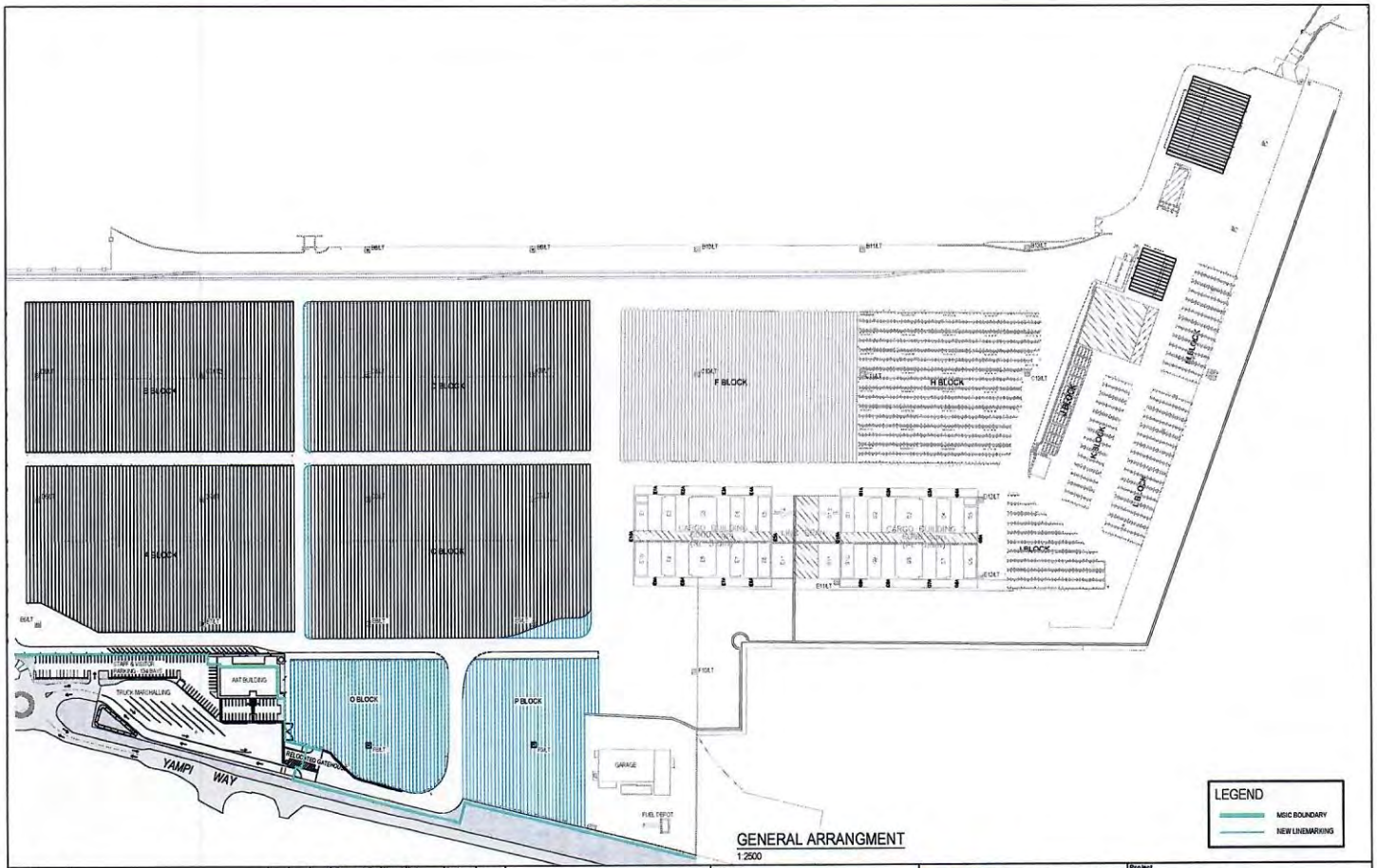
Scale: **A3**  
 1:2000

Prepared By	Signed	Date	Verified By	Signed	Date	Approved By	Signed	Date
PL	DN	04/05/19	DN	DN	20/05/19	DM	DM	DM

04/05/19 BLOCK B AMENDED  
 20/05/19 FOR INFORMATION

REV DATE BY Ver. App. Notes

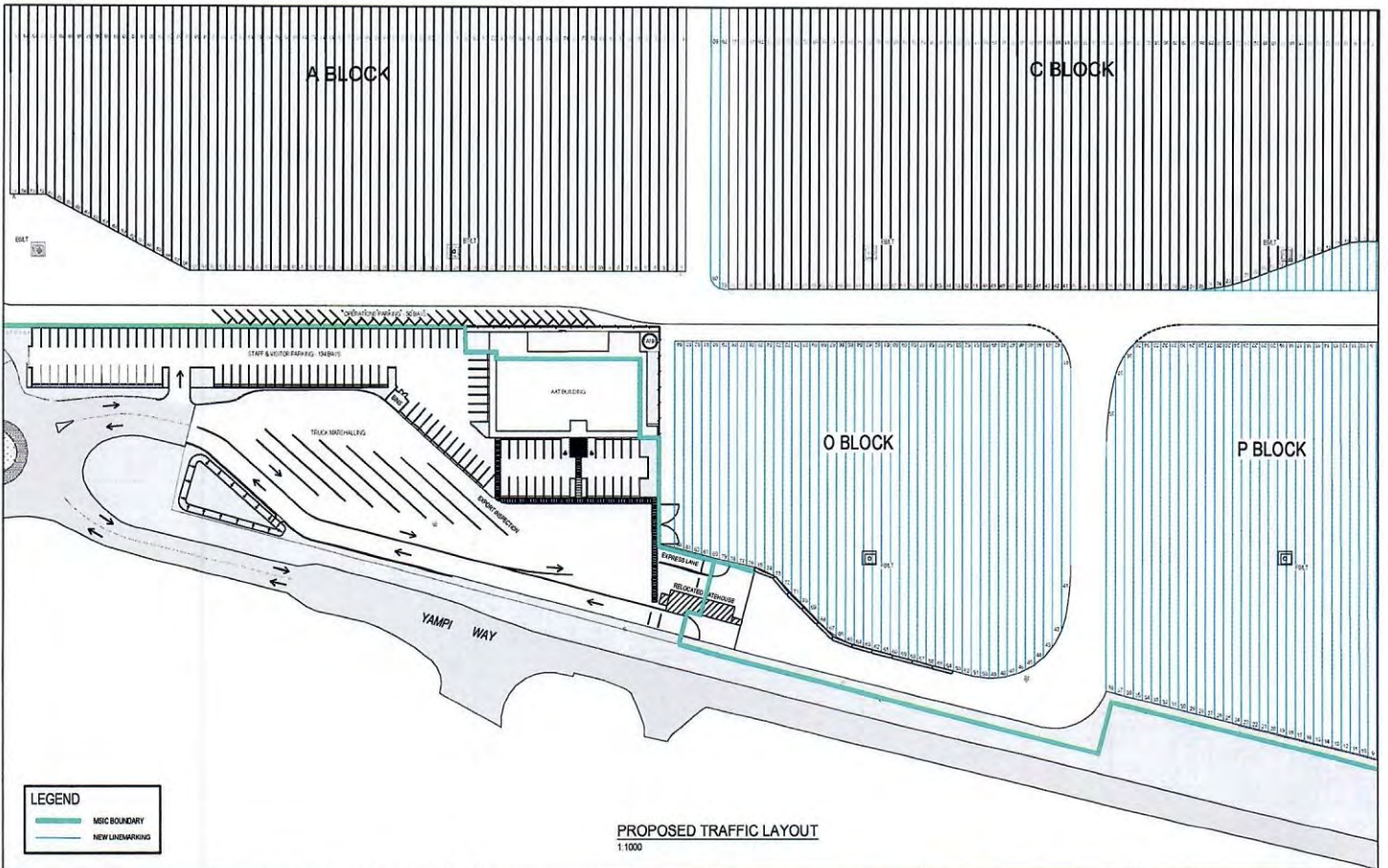
REVISIONS AND ISSUES



GENERAL ARRANGMENT  
1:2500

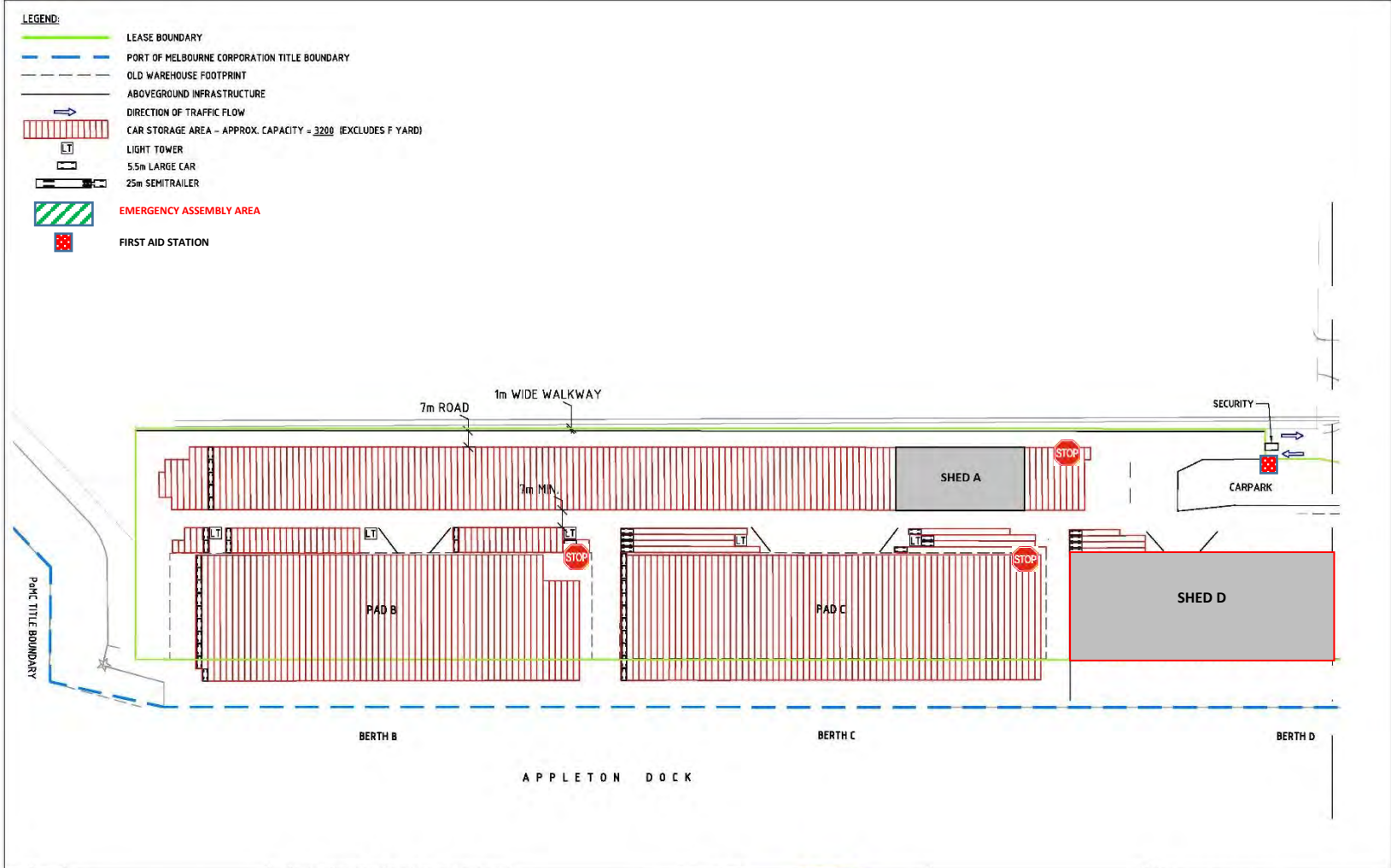
B 31/10/10 REISED FOR CLIENT COMMENTS A 16/10/10 DRAFT FOR CLIENT REVIEW		PL DM DM PL DM DM	Prepared By PL Verified By DM Approved By DM Horizontal Datum M/A Vertical Datum AMD	Signed Date 31/10/10 Signed Date 31/10/10 Signed Date 31/10/10 H/A	Scale 1:2500 A3			Client: Australian Amalgamated Terminals	James Rose Consulting ABN 64 175 064 511 Unit F21,1-15 Barr Street SALAMAN NSW 2041 PH 02 9555 8588 FAX 02 9555 8599 mail@jamesrose.com.au www.jamesrose.com.au	Project AAT PORT KEMBLA TERMINAL REDEVELOPMENT Drawing Title GENERAL ARRANGEMENT Status: DRAFT Project No. 433 Drawing No. 433-C-01 Rev. 8
---	--	----------------------	---	--	-----------------------	--	--	---	--	--

REV	DATE	REVISION DETAILS	BY	VER.	APP.	Vertical Datum	AMD
REVISIONS AND ISSUES							



0 31/10/19 16/10/19	REVISED FOR CLIENT COMMENTS DRAFT FOR CLIENT REVIEW	PL PL PL	DM DM DM	DM DM DM	Prepared By PL	Signed Date 31/10/19	Scale 1:1000 A3			Client  AAT Australian Amalgamated Terminals	 James Rose Consulting ABN 64 175 064 511 Unit F21.1-15 Barr Street BALMAIN NSW 2041 PH 02 9559 8585 FAX 02 9555 8599 mail@jamesrose.com.au www.jamesrose.com.au	Project AAT PORT KEMBLA WOLLONGONG, NSW	
					Varied By DM	Signed Date 31/10/19							Approved By DM
REV DATE 16/10/19	REVISION DETAILS REVISIONS AND ISSUES	BY PL	VOR DM	APP. DM	Vertical Datum AMD	Status DRAFT	Project No. 433	Drawing No. 433-2-02	Rev. 0	© James Rose Consulting	Project No. 433	Drawing No. 433-2-02	Rev. 0

# AAT APPLETON DOCK – SITE PLAN



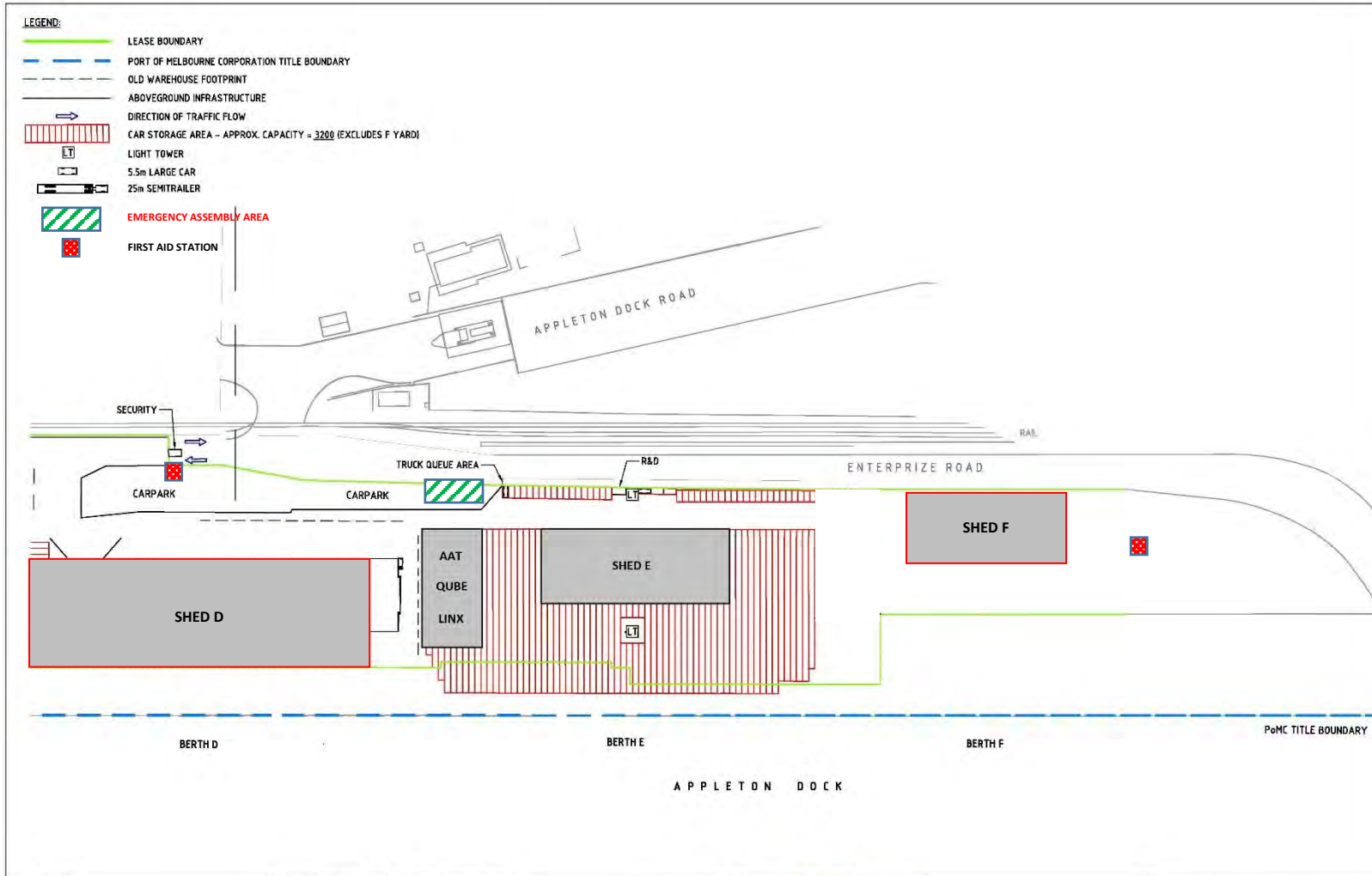
Prepared By	JG	Signed	14/01/14	Date	14/01/14	Scale	1:1500	A3
Verified By	CB	Signed	14/01/14	Date	14/01/14			
Approved By	DM	Signed	14/01/14	Date	14/01/14			
Verdict	DM	MDA (SOA #4)						
Delum		Zone 50						
Verdict		N/A						

REV	DATE	REVISION DETAILS	BY	Ver.	App.
REVISIONS AND ISSUES					

Client:

Project AAT APPLETON DOCK			
Drawing Title OPERATIONAL LAYOUT (SHEET 1 OF 2)			
Status   Draft	Project No.   317	Drawing No.   317-08-01	Rev.   C
© James Rice Consulting			

# AAT APPLETON DOCK – SITE PLAN



		Prepared By -js		Signed	Date	Scale	A3		 	Project AAT APPLETON DOCK				
		Verified By -js		Signed	Date					Drawing Title OPERATIONAL LAYOUT (SHEET 2 OF 2)				
		Approved By DM		Signed	Date					Status   Draft   Project No.   Drawing No.   Rev. © James Rose Consulting   317   317-SK-02   C				
REV	DATE	REVISION DETAILS			BY	Var.	App.	Verified	Datum			N/A		
REVISIONS AND ISSUES														

## **PART C: TERMINAL USERS IN WHICH QUBE OR A QUBE RELATED ENTITY HAS AN INTEREST**

Qube or a Qube Related Entity has a direct or indirect interest greater than or equal to 20% in the following Terminal Users who provided Stevedoring Services or PDI Operator Services at the following Terminals during the period covered by this Compliance Report:

### **Port Kembla Terminal**

Qube Ports Pty Ltd ACN 123 021 492

Prixcar Services Pty Ltd ACN 007 063 505

### **Brisbane Terminal**

Qube Ports Pty Ltd ACN 123 021 492

Prixcar Services Pty Ltd ACN 007 063 505